
Product Name: Exocyst Complex Component 3 Rabbit Monoclonal Antibody**Catalog #: AMRe02558**

For research use only.

Summary

Description	Recombinant rabbit monoclonal antibody
Host	Rabbit
Application	WB,ICC/IF,IP
Reactivity	Human,Mouse,Rat
Conjugation	Unconjugated
Modification	Unmodified
Isotype	IgG
Clonality	Monoclonal
Form	Liquid
Concentration	0.64mg/ml. The concentration of this product may be batch-dependent.
Storage	Aliquot and store at -20°C (valid for 12 months). Avoid freeze/thaw cycles.
Shipping	Ice bags
Buffer	50mM Tris-Glycine(pH 7.4), 0.15M NaCl, 40% Glycerol, 0.01% Sodium azide and 0.05% protective protein
Purification	Affinity Purification

Application

Dilution Ratio	WB 1:500-1:1000,ICC/IF 1:50-1:200,IP 1:20-1:50
Molecular Weight	Calculated MW: 86 kDa; Observed MW: 86 kDa

Antigen Information

Gene Name	EXOC3
Alternative Names	SEC6; Sec6p; SEC6L1
Gene ID	11336
SwissProt ID	O60645
Immunogen	A synthetic peptide of human rSec6

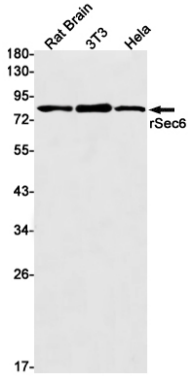
Background

Component of the exocyst complex involved in the docking of exocytic vesicles with fusion sites on the plasma membrane.

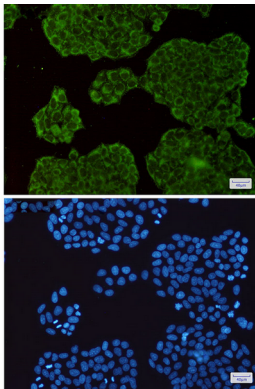
Research Area

Signal Transduction

Image Data



Western blot analysis of rSec6 in rat Brain, 3T3, HeLa lysates using Exocyst Complex Component 3 antibody.



Immunocytochemistry analysis of rSec6(green) in HeLa using rSec6 antibody, and DAPI(blue)