
Product Name: ROCK1 Rabbit Monoclonal Antibody**Catalog #: AMRe02547**

For research use only.

Summary

Description	Recombinant rabbit monoclonal antibody
Host	Rabbit
Application	WB,IHC,IF,IP,ELISA
Reactivity	Human,Mouse,Rat
Conjugation	Unconjugated
Modification	Unmodified
Isotype	IgG
Clonality	Monoclonal
Form	Liquid
Concentration	0.3mg/ml. The concentration of this product may be batch-dependent.
Storage	Aliquot and store at -20°C (valid for 12 months). Avoid freeze/thaw cycles.
Shipping	Ice bags
Buffer	50mM Tris-Glycine(pH 7.4), 0.15M NaCl, 40% Glycerol, 0.01% Sodium azide and 0.05% protective protein
Purification	Affinity Purification

Application

Dilution Ratio	IHC 1:200-1:1000;WB 1:1000-1:5000;IF 1:200-1:1000;ELISA 1:5000-1:20000;IP 1:50-1:200,
Molecular Weight	Calculated MW: 158 kDa; Observed MW: 158 kDa

Antigen Information

Gene Name	ROCK1 ROCK1; Rho-associated protein kinase 1; Renal carcinoma antigen NY-REN-35; Rho-associated; coiled-coil-containing protein kinase 1; Rho-associated; coiled-coil-containing protein kinase I; ROCK-I; p160 ROCK-1; p160ROCK
Alternative Names	
Gene ID	6093
SwissProt ID	Q13464
Immunogen	A synthetic peptide of human ROCK1

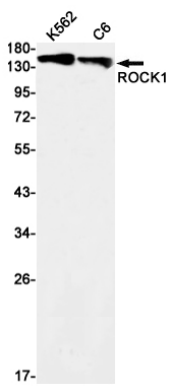
Background

ROCK1 Protein kinase which is a key regulator of actin cytoskeleton and cell polarity. Involved in regulation of smooth muscle contraction, actin cytoskeleton organization, stress fiber and focal adhesion formation, neurite retraction, cell adhesion and motility via phosphorylation of DAPK3, GFAP, LIMK1, LIMK2, MYL9/MLC2, PFN1 and PPP1R12A. Phosphorylates FHOD1 and acts synergistically with it to promote SRC-dependent non-apoptotic plasma membrane blebbing.

Research Area

Signal Transduction

Image Data



Western blot analysis of ROCK1 in K562, C6 lysates using ROCK1 antibody.