

**Product Name: REA Rabbit Monoclonal antibody****Catalog #: AMRe02534**

For research use only.

**Summary**

<b>Description</b>	Recombinant rabbit monoclonal antibody
<b>Host</b>	Rabbit
<b>Application</b>	WB,IHC,ICC/IF
<b>Reactivity</b>	Human,Mouse,Rat
<b>Conjugation</b>	Unconjugated
<b>Modification</b>	Unmodified
<b>Isotype</b>	IgG
<b>Clonality</b>	Monoclonal Antibody
<b>Form</b>	Liquid
<b>Concentration</b>	0.6mg/ml. The concentration of this product may be batch-dependent.
<b>Storage</b>	Aliquot and store at -20°C (valid for 12 months). Avoid freeze/thaw cycles.
<b>Shipping</b>	Ice bags
<b>Buffer</b>	50mM Tris-Glycine(pH 7.4), 0.15M NaCl, 40% Glycerol, 0.01% Sodium azide and 0.05% protective protein
<b>Purification</b>	Affinity Purified

**Application**

<b>Dilution Ratio</b>	WB 1:500-1:1000,IHC 1:50-1:100,ICC/IF 1:50-1:200
<b>Molecular Weight</b>	Calculated MW: 33 kDa; Observed MW: 33 kDa

**Antigen Information**

<b>Gene Name</b>	PHB2
<b>Alternative Names</b>	BAP; Bap37; BCAP 37; D prohibitin; p22; Phb2; PNAS 141; Prohibitin 2
<b>Gene ID</b>	11331
<b>SwissProt ID</b>	Q99623
<b>Immunogen</b>	A synthetic peptide of human REA

**Background**

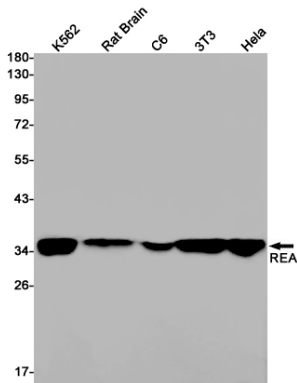
Acts as a mediator of transcriptional repression by nuclear hormone receptors via recruitment of histone deacetylases (By similarity). Functions as an estrogen receptor (ER)-selective coregulator that potentiates the inhibitory activities of

antiestrogens and represses the activity of estrogens.

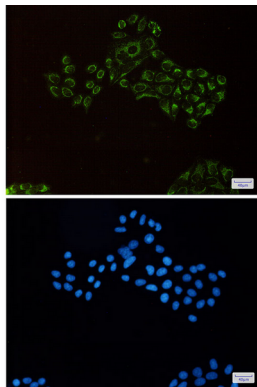
## Research Area

Signal Transduction

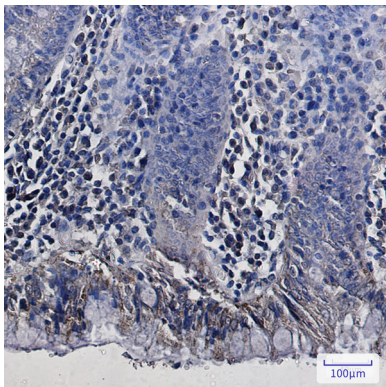
## Image Data



Western blot analysis of REA in K562, rat Brain, C6, 3T3, Hela lysates using REA antibody.



Immunocytochemistry analysis of REA(green) in Hela using REA antibody, and DAPI(blue)



Immunohistochemistry analysis of paraffin-embedded Human colon cancer using REA antibody. High-pressure and temperature Sodium Citrate pH 6.0 was used for antigen retrieval.