

Product Name: RASSF2 Rabbit Monoclonal Antibody
Catalog #: AMRe02526



Summary

| | |
|------------------------|-----------------------------------|
| Production Name | RASSF2 Rabbit Monoclonal Antibody |
| Description | Rabbit Monoclonal antibody |
| Host | Rabbit |
| Application | WB |
| Reactivity | Human |

Performance

| | |
|---------------------|--|
| Conjugation | Unconjugated |
| Modification | Unmodified |
| Isotype | IgG |
| Clonality | Monoclonal |
| Form | Liquid |
| Storage | Store at 4°C short term. Aliquot and store at -20°C long term. Avoid freeze/thaw cycles. |
| Buffer | 50mM Tris-Glycine(pH 7.4), 0.15M NaCl, 40% Glycerol, 0.01% Sodium azide and 0.05% protective protein |
| Purification | Affinity Purification |

Immunogen

| | |
|--------------------------|-------------------|
| Gene Name | RASSF2 |
| Alternative Names | CENP-34; RASFADIN |
| Gene ID | 9770 |
| SwissProt ID | P50749. |

Application

| | |
|-------------------------|--|
| Dilution Ratio | WB: 1:500-1:1000 |
| Molecular Weight | Calculated MW: 38 kDa; Observed MW: 38 kDa |

Background

Potential tumor suppressor. Acts as a KRAS-specific effector protein. May promote apoptosis and cell cycle arrest. Stabilizes

Product Name: RASSF2 Rabbit Monoclonal Antibody
Catalog #: AMRe02526

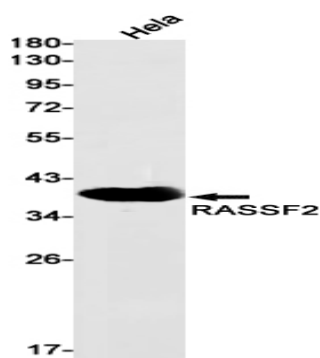


STK3/MST2 by protecting it from proteasomal degradation.

Research Area

Signal Transduction

Image Data



Western blot analysis of RASSF2 in HeLa lysates using RASSF2 antibody.

Note

For research use only.