
Product Name: RALB Rabbit Monoclonal Antibody**Catalog #: AMRe02518**

For research use only.

Summary

Description	Recombinant rabbit monoclonal antibody
Host	Rabbit
Application	WB,IP
Reactivity	Human,Mouse
Conjugation	Unconjugated
Modification	Unmodified
Isotype	IgG
Clonality	Monoclonal
Form	Liquid
Concentration	0.67mg/ml. The concentration of this product may be batch-dependent.
Storage	Aliquot and store at -20°C (valid for 12 months). Avoid freeze/thaw cycles.
Shipping	Ice bags
Buffer	50mM Tris-Glycine(pH 7.4), 0.15M NaCl, 40% Glycerol, 0.01% Sodium azide and 0.05% protective protein
Purification	Affinity Purification

Application

Dilution Ratio	WB 1:500-1:1000,IP 1:20-1:50
Molecular Weight	Calculated MW: 23 kDa; Observed MW: 23 kDa

Antigen Information

Gene Name	RALB
Alternative Names	Ras-related protein Ral-B
Gene ID	5899
SwissProt ID	P11234
Immunogen	A synthetic peptide of human RALB

Background

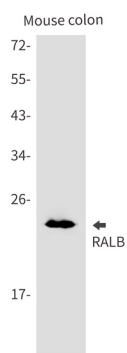
Multifunctional GTPase involved in a variety of cellular processes including gene expression, cell migration, cell proliferation, oncogenic transformation and membrane trafficking. Accomplishes its multiple functions by interacting with distinct

downstream effectors. Acts as a GTP sensor for GTP-dependent exocytosis of dense core vesicles . Required both to stabilize the assembly of the exocyst complex and to localize functional exocyst complexes to the leading edge of migrating cells . Required for suppression of apoptosis (PubMed:17875936). In late stages of cytokinesis, upon completion of the bridge formation between dividing cells, mediates exocyst recruitment to the midbody to drive abscission (PubMed:18756269).

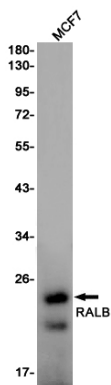
Research Area

Signal Transduction

Image Data



Western blot analysis of RALB in mouse colon lysates using RALB antibody.



Western blot analysis of RALB in MCF-7 lysates using RALB antibody.