

**Product Name: Radixin Rabbit Monoclonal Antibody****Catalog #: AMRe02514**

For research use only.

**Summary**

<b>Description</b>	Recombinant rabbit monoclonal antibody
<b>Host</b>	Rabbit
<b>Application</b>	WB,IHC,IP
<b>Reactivity</b>	Human,Mouse,Rat
<b>Conjugation</b>	Unconjugated
<b>Modification</b>	Unmodified
<b>Isotype</b>	IgG
<b>Clonality</b>	Monoclonal
<b>Form</b>	Liquid
<b>Concentration</b>	0.54mg/ml. The concentration of this product may be batch-dependent.
<b>Storage</b>	Aliquot and store at -20°C (valid for 12 months). Avoid freeze/thaw cycles.
<b>Shipping</b>	Ice bags
<b>Buffer</b>	50mM Tris-Glycine(pH 7.4), 0.15M NaCl, 40% Glycerol, 0.01% Sodium azide and 0.05% protective protein
<b>Purification</b>	Affinity Purification

**Application**

<b>Dilution Ratio</b>	WB 1:500-1:1000,IHC 1:50-1:100,IP 1:20-1:50
<b>Molecular Weight</b>	Calculated MW: 69 kDa; Observed MW: 80 kDa

**Antigen Information**

<b>Gene Name</b>	RDX
<b>Alternative Names</b>	RDX; Radixin
<b>Gene ID</b>	5962
<b>SwissProt ID</b>	P35241
<b>Immunogen</b>	A synthetic peptide of human Radixin

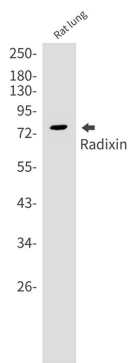
**Background**

Probably plays a crucial role in the binding of the barbed end of actin filaments to the plasma membrane.

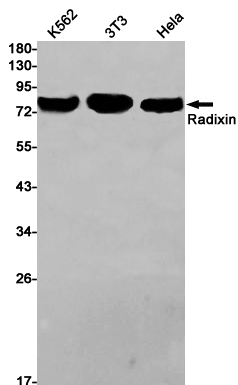
## Research Area

Signal Transduction

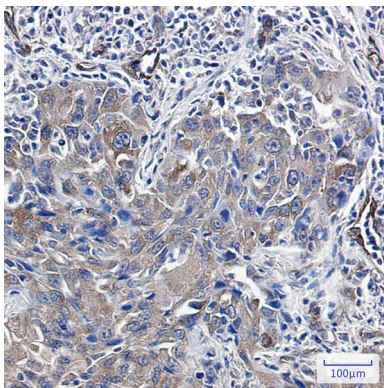
## Image Data



Western blot analysis of Radixin in rat lung lysates using Radixin antibody.



Western blot analysis of Radixin in K562, 3T3, Hela lysates using Radixin antibody.



Immunohistochemistry analysis of paraffin-embedded Human lung cancer using Radixin antibody. High-pressure and temperature Sodium Citrate pH 6.0 was used for antigen retrieval.