

---

**Product Name: Rab45 Rabbit Monoclonal Antibody****Catalog #: AMRe02506**

For research use only.

**Summary**

|                      |  |
|----------------------|--|
| <b>Description</b>   | Recombinant rabbit monoclonal antibody   |
| <b>Host</b>          | Rabbit   |
| <b>Application</b>   | WB,ICC/IF  |
| <b>Reactivity</b>    | Human,Mouse  |
| <b>Conjugation</b>   | Unconjugated   |
| <b>Modification</b>  | Unmodified   |
| <b>Isotype</b>       | IgG  |
| <b>Clonality</b>     | Monoclonal   |
| <b>Form</b>          | Liquid   |
| <b>Concentration</b> | 0.54mg/ml. The concentration of this product may be batch-dependent.                                 |
| <b>Storage</b>       | Aliquot and store at -20°C (valid for 12 months). Avoid freeze/thaw cycles.                          |
| <b>Shipping</b>      | Ice bags   |
| <b>Buffer</b>        | 50mM Tris-Glycine(pH 7.4), 0.15M NaCl, 40% Glycerol, 0.01% Sodium azide and 0.05% protective protein |
| <b>Purification</b>  | Affinity Purification  |

**Application**

|                         |  |
|-------------------------|--|
| <b>Dilution Ratio</b>   | WB 1:500-1:1000,ICC/IF 1:50-1:200          |
| <b>Molecular Weight</b> | Calculated MW: 83 kDa; Observed MW: 83 kDa |

**Antigen Information**

|                          |                                    |
|--------------------------|------------------------------------|
| <b>Gene Name</b>         | RASEF                              |
| <b>Alternative Names</b> | Ras-related protein Rab-45         |
| <b>Gene ID</b>           | 158158                             |
| <b>SwissProt ID</b>      | Q8IZ41                             |
| <b>Immunogen</b>         | A synthetic peptide of human RAB45 |

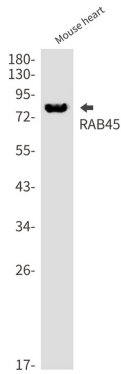
**Background**

Binds predominantly GDP, and also GTP.

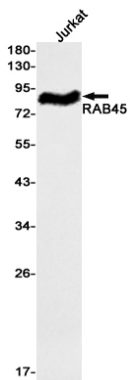
## Research Area

Signal Transduction

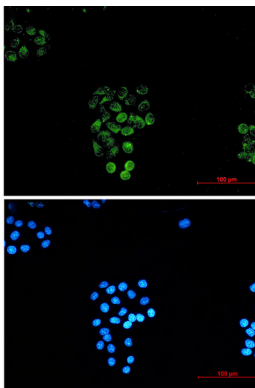
## Image Data



Western blot analysis of RAB45 in mouse heart lysates using Rab45 antibody.



Western blot analysis of RAB45 in Jurkat lysates using RAB45 antibody.



Immunocytochemistry analysis of RAB45 (green) in Hela using RAB45 antibody, and DAPI (blue)