
Product Name: Rab10 Rabbit Monoclonal Antibody**Catalog #: AMRe02504**

For research use only.

Summary

Description	Recombinant rabbit monoclonal antibody
Host	Rabbit
Application	WB,ICC/IF,IP
Reactivity	Human,Mouse,Rat
Conjugation	Unconjugated
Modification	Unmodified
Isotype	IgG
Clonality	Monoclonal
Form	Liquid
Concentration	0.67mg/ml. The concentration of this product may be batch-dependent.
Storage	Aliquot and store at -20°C (valid for 12 months). Avoid freeze/thaw cycles.
Shipping	Ice bags
Buffer	50mM Tris-Glycine(pH 7.4), 0.15M NaCl, 40% Glycerol, 0.01% Sodium azide and 0.05% protective protein
Purification	Affinity Purification

Application

Dilution Ratio	WB 1:500-1:1000,ICC/IF 1:50-1:200,IP 1:20-1:50
Molecular Weight	Calculated MW: 23 kDa; Observed MW: 23 kDa

Antigen Information

Gene Name	RAB10
Alternative Names	RAB10
Gene ID	10890
SwissProt ID	P61026
Immunogen	A synthetic peptide corresponding to target protein

Background

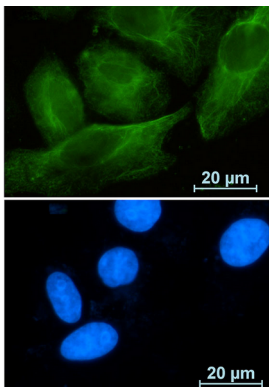
The small GTPases Rab are key regulators of intracellular membrane trafficking, from the formation of transport vesicles to their fusion with membranes. Rabs cycle between an inactive GDP-bound form and an active GTP-bound form that is able to recruit

to membranes different set of downstream effectors directly responsible for vesicle formation, movement, tethering and fusion . That Rab is mainly involved in the biosynthetic transport of proteins from the Golgi to the plasma membrane. Regulates, for instance, SLC2A4/GLUT4 glucose transporter-enriched vesicles delivery to the plasma membrane. In parallel, it regulates the transport of TLR4, a toll-like receptor to the plasma membrane and therefore may be important for innate immune response. Plays also a specific role in asymmetric protein transport to the plasma membrane within the polarized neuron and epithelial cells. In neurons, it is involved in axonogenesis through regulation of vesicular membrane trafficking toward the axonal plasma membrane while in epithelial cells, it regulates transport from the Golgi to the basolateral membrane. Moreover, may play a role in the basolateral recycling pathway and in phagosome maturation. According to PubMed:23263280, may play a role in endoplasmic reticulum dynamics and morphology controlling tubulation along microtubules and tubules fusion.

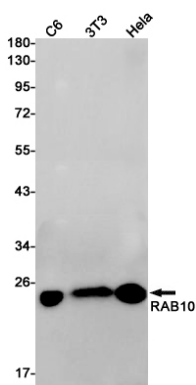
Research Area

Signal Transduction

Image Data



Immunocytochemistry analysis of Rab10 (green) in A549 using Rab10 antibody, and DAPI (blue).



Western blot analysis of RAB10 in C6, 3T3, HeLa lysates using RAB10 antibody.