
Product Name: PSS2 Rabbit Monoclonal Antibody**Catalog #: AMRe02493**

For research use only.

Summary

Description	Recombinant rabbit monoclonal antibody
Host	Rabbit
Application	WB,IP
Reactivity	Human
Conjugation	Unconjugated
Modification	Unmodified
Isotype	IgG
Clonality	Monoclonal
Form	Liquid
Concentration	0.5mg/ml. The concentration of this product may be batch-dependent.
Storage	Aliquot and store at -20°C (valid for 12 months). Avoid freeze/thaw cycles.
Shipping	Ice bags
Buffer	50mM Tris-Glycine(pH 7.4), 0.15M NaCl, 40% Glycerol, 0.01% Sodium azide and 0.05% protective protein
Purification	Affinity Purification

Application

Dilution Ratio	WB 1:500-1:1000,IP 1:20-1:50
Molecular Weight	Calculated MW: 56 kDa; Observed MW: 56 kDa

Antigen Information

Gene Name	PTDSS2
Alternative Names	PSS2
Gene ID	81490
SwissProt ID	Q9BVG9
Immunogen	Recombinant protein of human PTDSS2

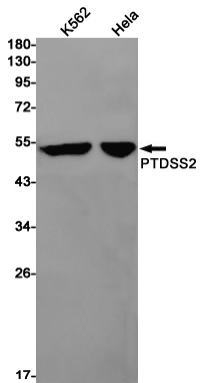
Background

Catalyzes a base-exchange reaction in which the polar head group of phosphatidylethanolamine (PE) or phosphatidylcholine (PC) is replaced by L-serine. PTDSS2 is specific for phosphatidylethanolamine and does not act on phosphatidylcholine.

Research Area

Signal Transduction

Image Data



Western blot analysis of PTDS2 in K562, HeLa lysates using PSS2 antibody.