

**Product Name: PSMB10 Rabbit Monoclonal Antibody**  
**Catalog #: AMRe02491**



## Summary

<b>Production Name</b>	PSMB10 Rabbit Monoclonal Antibody
<b>Description</b>	Rabbit Monoclonal antibody
<b>Host</b>	Rabbit
<b>Application</b>	WB
<b>Reactivity</b>	Human,Rat

## Performance

<b>Conjugation</b>	Unconjugated
<b>Modification</b>	Unmodified
<b>Isotype</b>	IgG
<b>Clonality</b>	Monoclonal
<b>Form</b>	Liquid
<b>Storage</b>	Store at 4°C short term. Aliquot and store at -20°C long term. Avoid freeze/thaw cycles.
<b>Buffer</b>	50mM Tris-Glycine(pH 7.4), 0.15M NaCl, 40% Glycerol, 0.01% Sodium azide and 0.05% protective protein
<b>Purification</b>	Affinity Purification

## Immunogen

<b>Gene Name</b>	PSMB10
<b>Alternative Names</b>	LMP10; MECL1; beta2i
<b>Gene ID</b>	5699
<b>SwissProt ID</b>	P40306.

## Application

<b>Dilution Ratio</b>	WB: 1:500-1:1000
<b>Molecular Weight</b>	Calculated MW: 29 kDa; Observed MW: 29 kDa

## Background

The proteasome is a multicatalytic proteinase complex which is characterized by its ability to cleave peptides with Arg, Phe,

**Product Name: PSMB10 Rabbit Monoclonal Antibody**  
**Catalog #: AMRe02491**

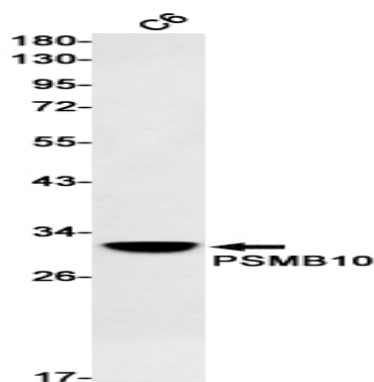


Tyr, Leu, and Glu adjacent to the leaving group at neutral or slightly basic pH. The proteasome has an ATP-dependent proteolytic activity. This subunit is involved in antigen processing to generate class I binding peptides.

## Research Area

Immunology

## Image Data



Western blot analysis of PSMB10 in C6 lysates using PSMB10 antibody.

## Note

For research use only.