

---

**Product Name: PSMA4 Rabbit Monoclonal Antibody****Catalog #: AMRe02490**

For research use only.

**Summary**

<b>Description</b>	Recombinant rabbit monoclonal antibody
<b>Host</b>	Rabbit
<b>Application</b>	WB,IHC,ICC/IF,IP
<b>Reactivity</b>	Human,Mouse,Rat
<b>Conjugation</b>	Unconjugated
<b>Modification</b>	Unmodified
<b>Isotype</b>	IgG
<b>Clonality</b>	Monoclonal
<b>Form</b>	Liquid
<b>Concentration</b>	0.67mg/ml. The concentration of this product may be batch-dependent.
<b>Storage</b>	Aliquot and store at -20°C (valid for 12 months). Avoid freeze/thaw cycles.
<b>Shipping</b>	Ice bags
<b>Buffer</b>	50mM Tris-Glycine(pH 7.4), 0.15M NaCl, 40% Glycerol, 0.01% Sodium azide and 0.05% protective protein
<b>Purification</b>	Affinity Purification

**Application**

<b>Dilution Ratio</b>	WB 1:500-1:1000,IHC 1:50-1:100,ICC/IF 1:50-1:200,IP 1:20-1:50
<b>Molecular Weight</b>	Calculated MW: 29 kDa; Observed MW: 29 kDa

**Antigen Information**

<b>Gene Name</b>	PSMA4
<b>Alternative Names</b>	proteasome subunit alpha 4; HC9; PSC9; HsT17706
<b>Gene ID</b>	5685
<b>SwissProt ID</b>	P25789
<b>Immunogen</b>	A synthetic peptide of human PSMA4

**Background**

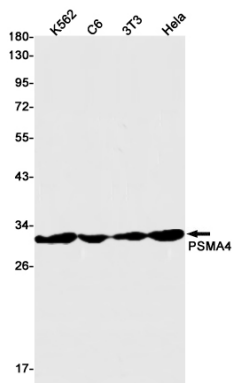
Component of the 20S core proteasome complex involved in the proteolytic degradation of most intracellular proteins. This complex plays numerous essential roles within the cell by associating with different regulatory particles. Associated with two

19S regulatory particles, forms the 26S proteasome and thus participates in the ATP-dependent degradation of ubiquitinated proteins. The 26S proteasome plays a key role in the maintenance of protein homeostasis by removing misfolded or damaged proteins that could impair cellular functions, and by removing proteins whose functions are no longer required. Associated with the PA200 or PA28, the 20S proteasome mediates ubiquitin-independent protein degradation. This type of proteolysis is required in several pathways including spermatogenesis (20S-PA200 complex) or generation of a subset of MHC class I-presented antigenic peptides (20S-PA28 complex).

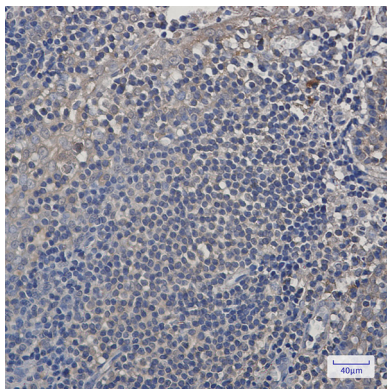
## Research Area

Cell Biology

## Image Data



Western blot analysis of PSMA4 in K562, C6, 3T3, HeLa lysates using PSMA4 antibody.



Immunohistochemistry analysis of paraffin-embedded Human tonsil using PSMA4 antibody. High-pressure and temperature Sodium Citrate pH 6.0 was used for antigen retrieval.