
Product Name: PRPF8 Rabbit Monoclonal Antibody**Catalog #: AMRe02486**

For research use only.

Summary

Description	Recombinant rabbit monoclonal antibody
Host	Rabbit
Application	WB,IHC
Reactivity	Human
Conjugation	Unconjugated
Modification	Unmodified
Isotype	IgG
Clonality	Monoclonal
Form	Liquid
Concentration	1mg/ml. The concentration of this product may be batch-dependent.
Storage	Aliquot and store at -20°C (valid for 12 months). Avoid freeze/thaw cycles.
Shipping	Ice bags
Buffer	50mM Tris-Glycine(pH 7.4), 0.15M NaCl, 40% Glycerol, 0.01% Sodium azide and 0.05% protective protein
Purification	Affinity Purification

Application

Dilution Ratio	WB 1:500-1:1000,IHC 1:50-1:100
Molecular Weight	Calculated MW: 274 kDa; Observed MW: 274 kDa

Antigen Information

Gene Name	PRPF8
Alternative Names	HPRP8; p220; PRP8; PRPC8; Prpf8; RP13; SNRNP220
Gene ID	10594
SwissProt ID	Q6P2Q9
Immunogen	A synthetic peptide of human PRPF8

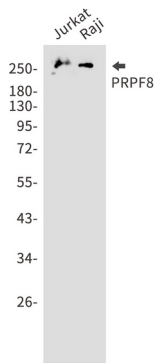
Background

Central component of the spliceosome, which may play a role in aligning the pre-mRNA 5'- and 3'-exons for ligation. Interacts with U5 snRNA, and with pre-mRNA 5'-splice sites in B spliceosomes and 3'-splice sites in C spliceosomes.

Research Area

Epigenetics and Nuclear Signaling

Image Data



Western blot analysis of PRPF8 in Jurkat, Raji lysates using PRPF8 antibody.