

---

**Product Name: Proteasome alpha 6 Rabbit Monoclonal Antibody****Catalog #: AMRe02481**

For research use only.

**Summary**

<b>Description</b>	Recombinant rabbit monoclonal antibody
<b>Host</b>	Rabbit
<b>Application</b>	WB,ICC/IF
<b>Reactivity</b>	Human,Mouse,Rat
<b>Conjugation</b>	Unconjugated
<b>Modification</b>	Unmodified
<b>Isotype</b>	IgG
<b>Clonality</b>	Monoclonal
<b>Form</b>	Liquid
<b>Concentration</b>	0.67mg/ml. The concentration of this product may be batch-dependent.
<b>Storage</b>	Aliquot and store at -20°C (valid for 12 months). Avoid freeze/thaw cycles.
<b>Shipping</b>	Ice bags
<b>Buffer</b>	50mM Tris-Glycine(pH 7.4), 0.15M NaCl, 40% Glycerol, 0.01% Sodium azide and 0.05% protective protein
<b>Purification</b>	Affinity Purification

**Application**

<b>Dilution Ratio</b>	WB 1:500-1:1000,ICC/IF 1:50-1:200
<b>Molecular Weight</b>	Calculated MW: 27 kDa; Observed MW: 27 kDa

**Antigen Information**

<b>Gene Name</b>	PSMA6
<b>Alternative Names</b>	proteasome subunit alpha 6; IOTA; p27K; PROS27
<b>Gene ID</b>	5687
<b>SwissProt ID</b>	P60900
<b>Immunogen</b>	A synthetic peptide of human Proteasome subunit alpha type 6

**Background**

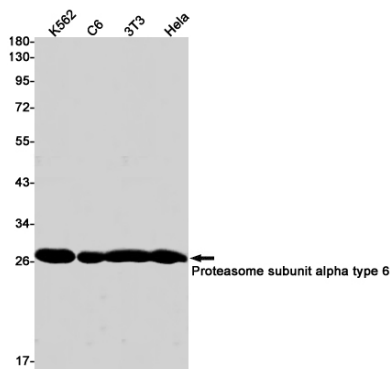
The proteasome is a multicatalytic proteinase complex with a highly ordered ring-shaped 20S core structure. The core structure is composed of 4 rings of 28 non-identical subunits; 2 rings are composed of 7 alpha subunits and 2 rings are composed of 7

beta subunits. Proteasomes are distributed throughout eukaryotic cells at a high concentration and cleave peptides in an ATP/ubiquitin-dependent process in a non-lysosomal pathway. An essential function of a modified proteasome, the immunoproteasome, is the processing of class I MHC peptides. This gene encodes a member of the peptidase T1A family, that is a 20S core alpha subunit. Multiple transcript variants encoding several different isoforms have been found for this gene. A pseudogene has been identified on the Y chromosome. [provided by RefSeq, Aug 2013]

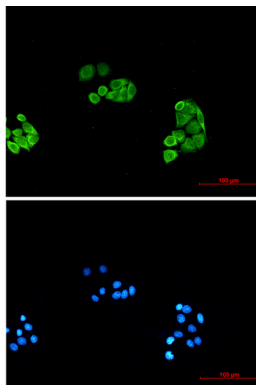
## Research Area

Cell Biology

## Image Data



Western blot analysis of Proteasome subunit alpha type 6 in K562, C6, 3T3, HeLa lysates using Proteasome alpha 6 antibody.



Immunocytochemistry analysis of Proteasome subunit alpha type 6 (green) in HeLa using Proteasome subunit alpha type 6 antibody, and DAPI (blue)