
Product Name: Proteasome beta 9 Rabbit Monoclonal Antibody**Catalog #: AMRe02480**

For research use only.

Summary

Description	Recombinant rabbit monoclonal antibody
Host	Rabbit
Application	WB,ICC/IF
Reactivity	Human,Mouse,Rat
Conjugation	Unconjugated
Modification	Unmodified
Isotype	IgG
Clonality	Monoclonal
Form	Liquid
Concentration	0.67mg/ml. The concentration of this product may be batch-dependent.
Storage	Aliquot and store at -20°C (valid for 12 months). Avoid freeze/thaw cycles.
Shipping	Ice bags
Buffer	50mM Tris-Glycine(pH 7.4), 0.15M NaCl, 40% Glycerol, 0.01% Sodium azide and 0.05% protective protein
Purification	Affinity Purification

Application

Dilution Ratio	WB 1:500-1:1000,ICC/IF 1:50-1:200
Molecular Weight	Calculated MW: 23 kDa; Observed MW: 23 kDa

Antigen Information

Gene Name	PSMB9
Alternative Names	Beta1i; LMP2; PSMB 9; PSMB6i; PSMB9; RING12
Gene ID	5698
SwissProt ID	P28065
Immunogen	A synthetic peptide of human Proteasome 20S LMP2

Background

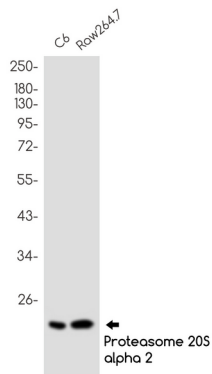
The proteasome is a multicatalytic proteinase complex which is characterized by its ability to cleave peptides with Arg, Phe, Tyr, Leu, and Glu adjacent to the leaving group at neutral or slightly basic pH. The proteasome has an ATP-dependent proteolytic

activity.

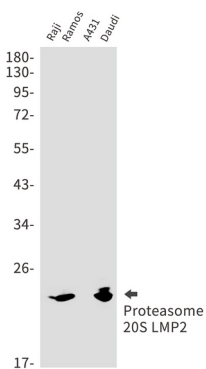
Research Area

Cell Biology

Image Data



Western blot analysis of Proteasome 20S LMP2 in C6, Raw264.7 lysates using Proteasome beta 9 antibody.



Western blot analysis of Proteasome 20S LMP2 in Raji, Ramos, A431, Daudi lysates using Proteasome 20S LMP2 antibody.