

Product Name: Proteasome alpha 2 Rabbit Monoclonal Antibody**Catalog #: AMRe02479**

For research use only.

Summary

Description	Recombinant rabbit monoclonal antibody
Host	Rabbit
Application	WB,IHC,ICC/IF
Reactivity	Human,Mouse,Rat
Conjugation	Unconjugated
Modification	Unmodified
Isotype	IgG
Clonality	Monoclonal
Form	Liquid
Concentration	0.45mg/ml. The concentration of this product may be batch-dependent.
Storage	Aliquot and store at -20°C (valid for 12 months). Avoid freeze/thaw cycles.
Shipping	Ice bags
Buffer	50mM Tris-Glycine(pH 7.4), 0.15M NaCl, 40% Glycerol, 0.01% Sodium azide and 0.05% protective protein
Purification	Affinity Purification

Application

Dilution Ratio	WB 1:500-1:1000,IHC 1:50-1:100,ICC/IF 1:50-1:200
Molecular Weight	Calculated MW: 26 kDa; Observed MW: 26 kDa

Antigen Information

Gene Name	PSMA2
Alternative Names	HC3; PMSA2; Proteasome component C3; PSC2; PSC3; psmA2
Gene ID	5683
SwissProt ID	P25787
Immunogen	A synthetic peptide of human Proteasome 20S alpha 2

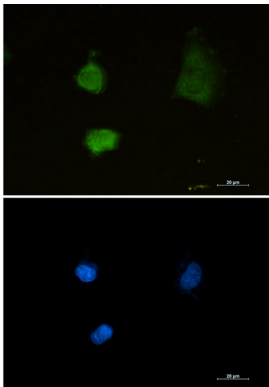
Background

The proteasome is a multicatalytic proteinase complex which is characterized by its ability to cleave peptides with Arg, Phe, Tyr, Leu, and Glu adjacent to the leaving group at neutral or slightly basic pH.

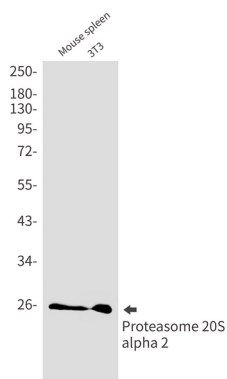
Research Area

Cell Biology

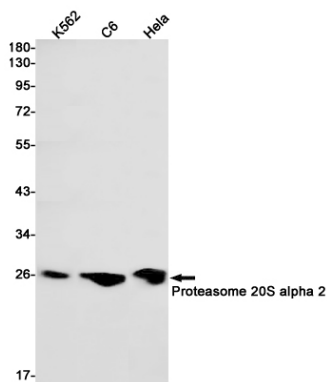
Image Data



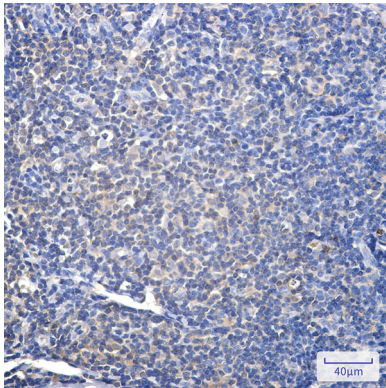
Immunocytochemistry analysis of Proteasome alpha 2 (green) in U87-MG using Proteasome alpha 2 antibody, and DAPI (blue).



Western blot analysis of Proteasome 20S alpha 2 in mouse spleen, 3T3 lysates using Proteasome 20S alpha 2 antibody.



Western blot analysis of Proteasome 20S alpha 2 in K562, C6, HeLa lysates using Proteasome 20S alpha 2 antibody



Immunohistochemistry analysis of paraffin-embedded Human tonsil using Proteasome 20S alpha 2 antibody. High-pressure and temperature Sodium Citrate pH 6.0 was used for antigen retrieval.