

---

**Product Name:** Phospho-Progesterone Receptor (Ser190) Rabbit Monoclonal Antibody  
**Catalog #:** AMRe02476

For research use only.

## Summary

<b>Description</b>	Recombinant rabbit monoclonal antibody
<b>Host</b>	Rabbit
<b>Application</b>	WB,IHC,ICC/IF,IP
<b>Reactivity</b>	Human
<b>Conjugation</b>	Unconjugated
<b>Modification</b>	Phosphorylated
<b>Isotype</b>	IgG
<b>Clonality</b>	Monoclonal
<b>Form</b>	Liquid
<b>Concentration</b>	0.5mg/ml. The concentration of this product may be batch-dependent.
<b>Storage</b>	Aliquot and store at -20°C (valid for 12 months). Avoid freeze/thaw cycles.
<b>Shipping</b>	Ice bags
<b>Buffer</b>	50mM Tris-Glycine(pH 7.4), 0.15M NaCl, 40% Glycerol, 0.01% Sodium azide and 0.05% protective protein
<b>Purification</b>	Affinity Purification

## Application

<b>Dilution Ratio</b>	WB 1:500-1:1000,IHC 1:50-1:100,ICC/IF 1:50-1:200,IP 1:20-1:50
<b>Molecular Weight</b>	Calculated MW: 99 kDa; Observed MW: 90,118 kDa

## Antigen Information

<b>Gene Name</b>	PGR
<b>Alternative Names</b>	PGR; NR3C3; Progesterone receptor; PR; Nuclear receptor subfamily 3 group C member 3
<b>Gene ID</b>	5241
<b>SwissProt ID</b>	P06401
<b>Immunogen</b>	A synthetic Phosphorylated peptide corresponding to residues target protein

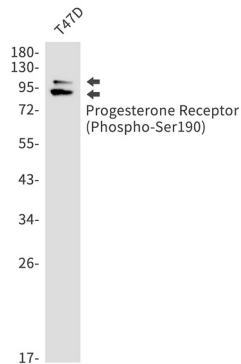
## Background

Progesterone plays a central role in the reproductive events associated with the establishment and maintenance of pregnancy. Progesterone receptor, a member of the steroid receptor superfamily, mediates the physiologic effects of progesterone.

## Research Area

Epigenetics and Nuclear Signaling

## Image Data



Western blot analysis of Progesterone Receptor (Phospho-Ser190) in T47D lysates using Phospho-Progesterone Receptor (Ser190) antibody.