
Product Name: Phospho-PRC1 (Thr481) Rabbit Monoclonal Antibody**Catalog #: AMRe02468**

For research use only.

Summary

Description	Recombinant rabbit monoclonal antibody
Host	Rabbit
Application	WB,IHC,ICC/IF
Reactivity	Human
Conjugation	Unconjugated
Modification	Phosphorylated
Isotype	IgG
Clonality	Monoclonal
Form	Liquid
Concentration	0.5mg/ml. The concentration of this product may be batch-dependent.
Storage	Aliquot and store at -20°C (valid for 12 months). Avoid freeze/thaw cycles.
Shipping	Ice bags
Buffer	50mM Tris-Glycine(pH 7.4), 0.15M NaCl, 40% Glycerol, 0.01% Sodium azide and 0.05% protective protein
Purification	Affinity Purification

Application

Dilution Ratio	WB 1:500-1:1000,IHC 1:50-1:100,ICC/IF 1:50-1:200
Molecular Weight	Calculated MW: 72 kDa; Observed MW: 72 kDa

Antigen Information

Gene Name	PRC1
Alternative Names	Protein regulator of cytokinesis 1
Gene ID	9055
SwissProt ID	O43663
Immunogen	A synthetic Phosphorylated peptide corresponding to residues target protein

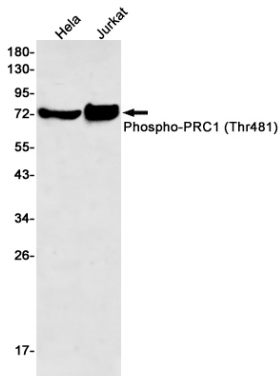
Background

Cross-links antiparrallel microtubules at an average distance of 35 nM. Essential for controlling the spatiotemporal formation of the midzone and successful cytokinesis. Required for KIF14 localization to the central spindle and midbody.

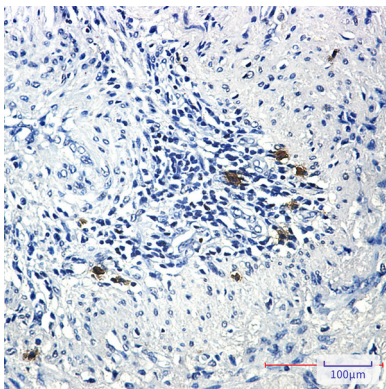
Research Area

Cell Biology

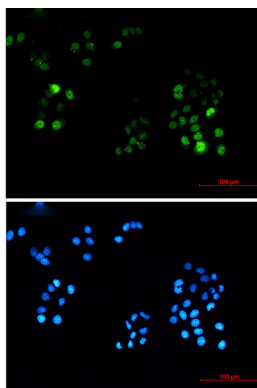
Image Data



Western blot analysis of Phospho-PRC1 (Thr481) in HeLa, Jurkat lysates using Phospho-PRC1 (Thr481) antibody.



Immunohistochemistry analysis of paraffin-embedded Human lung cancer using PRC1 (Phospho-Thr481) antibody. High-pressure and temperature Sodium Citrate pH 6.0 was used for antigen retrieval.



Immunocytochemistry analysis of Phospho-PRC1 (Thr481) (green) in HeLa using Phospho-PRC1 (Thr481) antibody, and DAPI (blue)