

---

**Product Name: PPP2R5E Rabbit Monoclonal Antibody****Catalog #: AMRe02467**

For research use only.

**Summary**

<b>Description</b>	Recombinant rabbit monoclonal antibody
<b>Host</b>	Rabbit
<b>Application</b>	WB,IHC,ICC/IF,IP
<b>Reactivity</b>	Human,Mouse,Rat
<b>Conjugation</b>	Unconjugated
<b>Modification</b>	Unmodified
<b>Isotype</b>	IgG
<b>Clonality</b>	Monoclonal
<b>Form</b>	Liquid
<b>Concentration</b>	0.67mg/ml. The concentration of this product may be batch-dependent.
<b>Storage</b>	Aliquot and store at -20°C (valid for 12 months). Avoid freeze/thaw cycles.
<b>Shipping</b>	Ice bags
<b>Buffer</b>	50mM Tris-Glycine(pH 7.4), 0.15M NaCl, 40% Glycerol, 0.01% Sodium azide and 0.05% protective protein
<b>Purification</b>	Affinity Purification

**Application**

<b>Dilution Ratio</b>	WB 1:500-1:1000,IHC 1:50-1:100,ICC/IF 1:50-1:200,IP 1:20-1:50
<b>Molecular Weight</b>	Calculated MW: 55 kDa; Observed MW: 55 kDa

**Antigen Information**

<b>Gene Name</b>	PPP2R5E
<b>Alternative Names</b>	B56E; B56epsilon
<b>Gene ID</b>	5529
<b>SwissProt ID</b>	Q16537
<b>Immunogen</b>	A synthetic peptide of human PPP2R5E

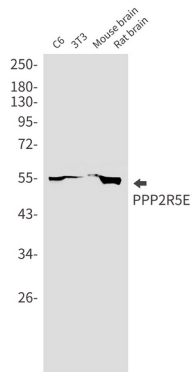
**Background**

The B regulatory subunit might modulate substrate selectivity and catalytic activity, and also might direct the localization of the catalytic enzyme to a particular subcellular compartment.

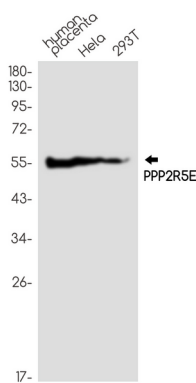
## Research Area

Neuroscience

## Image Data



Western blot analysis of PPP2R5E in C6, 3T3, mouse brain, rat brain lysates using PPP2R5E antibody.



Western blot analysis of PPP2R5E in Human placenta, HeLa, 293T lysates using PPP2R5E antibody.