
Product Name: PKC gamma Rabbit Monoclonal antibody**Catalog #: AMRe02450**

For research use only.

Summary

Description	Recombinant rabbit monoclonal antibody
Host	Rabbit
Application	WB,IP
Reactivity	Human,Rat
Conjugation	Unconjugated
Modification	Unmodified
Isotype	IgG
Clonality	Monoclonal Antibody
Form	Liquid
Concentration	0.98mg/ml. The concentration of this product may be batch-dependent.
Storage	Aliquot and store at -20°C (valid for 12 months). Avoid freeze/thaw cycles.
Shipping	Ice bags
Buffer	50mM Tris-Glycine(pH 7.4), 0.15M NaCl, 40% Glycerol, 0.01% Sodium azide and 0.05% protective protein
Purification	Affinity Purified

Application

Dilution Ratio	WB 1:500-1:1000,IP 1:20-1:50
Molecular Weight	Calculated MW: 78 kDa; Observed MW: 78 kDa

Antigen Information

Gene Name	PRKCG
Alternative Names	PRKCG; PKCG; Protein kinase C gamma type; PKC-gamma
Gene ID	5582
SwissProt ID	P05129
Immunogen	Recombinant protein of human PKC

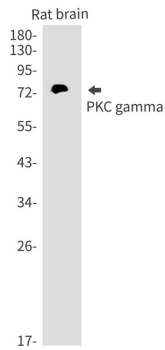
Background

This is a calcium-activated, phospholipid-dependent, serine- and threonine-specific enzyme.

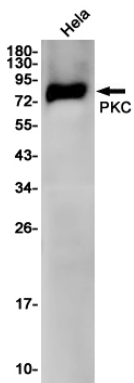
Research Area

Signal Transduction

Image Data



Western blot analysis of PKC gamma in rat brain lysates using PKC gamma antibody.



Western blot analysis of PKC in HeLa lysates using PKC antibody.