

**Product Name: PKC eta Rabbit Monoclonal antibody****Catalog #: AMRe02447**

For research use only.

**Summary**

|                      |  |
|----------------------|--|
| <b>Description</b>   | Recombinant rabbit monoclonal antibody   |
| <b>Host</b>          | Rabbit   |
| <b>Application</b>   | WB,IP  |
| <b>Reactivity</b>    | Human,Mouse,Rat  |
| <b>Conjugation</b>   | Unconjugated   |
| <b>Modification</b>  | Unmodified   |
| <b>Isotype</b>       | IgG  |
| <b>Clonality</b>     | Monoclonal Antibody  |
| <b>Form</b>          | Liquid   |
| <b>Concentration</b> | 1.47mg/ml. The concentration of this product may be batch-dependent.                                 |
| <b>Storage</b>       | Aliquot and store at -20°C (valid for 12 months). Avoid freeze/thaw cycles.                          |
| <b>Shipping</b>      | Ice bags   |
| <b>Buffer</b>        | 50mM Tris-Glycine(pH 7.4), 0.15M NaCl, 40% Glycerol, 0.01% Sodium azide and 0.05% protective protein |
| <b>Purification</b>  | Affinity Purified  |

**Application**

|                         |  |
|-------------------------|--|
| <b>Dilution Ratio</b>   | WB 1:500-1:1000,IP 1:20-1:50               |
| <b>Molecular Weight</b> | Calculated MW: 78 kDa; Observed MW: 78 kDa |

**Antigen Information**

|                          |  |
|--------------------------|--|
| <b>Gene Name</b>         | PRKCH  |
| <b>Alternative Names</b> | nPKC eta; PKC h; PKC L; PKCh; PKCL; Prkch; PRKCL; Protein kinase C eta |
| <b>Gene ID</b>           | 5583   |
| <b>SwissProt ID</b>      | P24723   |
| <b>Immunogen</b>         | A synthetic peptide of human PKC eta                                   |

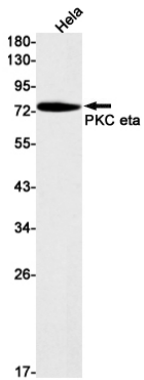
**Background**

PKC is activated by diacylglycerol which in turn phosphorylates a range of cellular proteins. PKC also serves as the receptor for phorbol esters, a class of tumor promoters.

## Research Area

Signal Transduction

## Image Data



Western blot analysis of PKC eta in HeLa lysates using PKC eta antibody.