
Product Name: PDLIM1 Rabbit Monoclonal Antibody**Catalog #: AMRe02416**

For research use only.

Summary

Description	Recombinant rabbit monoclonal antibody
Host	Rabbit
Application	WB,ICC/IF,IP
Reactivity	Human,Mouse,Rat
Conjugation	Unconjugated
Modification	Unmodified
Isotype	IgG
Clonality	Monoclonal
Form	Liquid
Concentration	0.65mg/ml. The concentration of this product may be batch-dependent.
Storage	Aliquot and store at -20°C (valid for 12 months). Avoid freeze/thaw cycles.
Shipping	Ice bags
Buffer	50mM Tris-Glycine(pH 7.4), 0.15M NaCl, 40% Glycerol, 0.01% Sodium azide and 0.05% protective protein
Purification	Affinity Purification

Application

Dilution Ratio	WB 1:500-1:1000,ICC/IF 1:50-1:200,IP 1:20-1:50
Molecular Weight	Calculated MW: 36 kDa; Observed MW: 36 kDa

Antigen Information

Gene Name	PDLIM1
Alternative Names	PDLIM1; CLIM1; CLP36; PDZ and LIM domain protein 1; C-terminal LIM domain protein 1; Elfin; LIM domain protein CLP-36
Gene ID	9124
SwissProt ID	O00151
Immunogen	A synthetic peptide of human PDLIM1

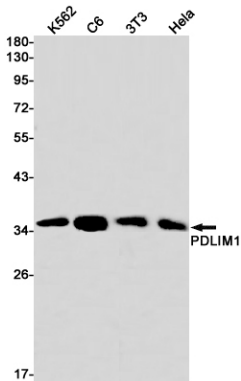
Background

Cytoskeletal protein that may act as an adapter that brings other proteins (like kinases) to the cytoskeleton.

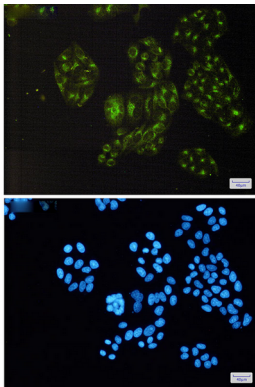
Research Area

Epigenetics and Nuclear Signaling

Image Data



Western blot analysis of PDLIM1 in K562, C6, 3T3, HeLa lysates using PDLIM1 antibody.



Immunocytochemistry analysis of PDLIM1(green) in HeLa using PDLIM1 antibody, and DAPI(blue)