

---

**Product Name: PCK2 Rabbit Monoclonal Antibody****Catalog #: AMRe02407**

For research use only.

**Summary**

<b>Description</b>	Recombinant rabbit monoclonal antibody
<b>Host</b>	Rabbit
<b>Application</b>	WB,IHC,ICC/IF
<b>Reactivity</b>	Human,Mouse,Rat
<b>Conjugation</b>	Unconjugated
<b>Modification</b>	Unmodified
<b>Isotype</b>	IgG
<b>Clonality</b>	Monoclonal
<b>Form</b>	Liquid
<b>Concentration</b>	0.54mg/ml. The concentration of this product may be batch-dependent.
<b>Storage</b>	Aliquot and store at -20°C (valid for 12 months). Avoid freeze/thaw cycles.
<b>Shipping</b>	Ice bags
<b>Buffer</b>	50mM Tris-Glycine(pH 7.4), 0.15M NaCl, 40% Glycerol, 0.01% Sodium azide and 0.05% protective protein
<b>Purification</b>	Affinity Purification

**Application**

<b>Dilution Ratio</b>	WB 1:500-1:1000,IHC 1:50-1:100,ICC/IF 1:50-1:200
<b>Molecular Weight</b>	Calculated MW: 71 kDa; Observed MW: 71 kDa

**Antigen Information**

<b>Gene Name</b>	PCK2
<b>Alternative Names</b>	PCK2; PEPCK2; Phosphoenolpyruvate carboxykinase [GTP]; mitochondrial; PEPCK-M; Phosphoenolpyruvate carboxylase
<b>Gene ID</b>	5106
<b>SwissProt ID</b>	Q16822
<b>Immunogen</b>	A synthetic peptide of human PCK2

**Background**

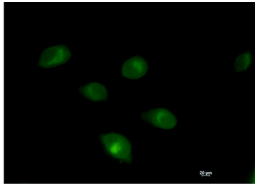
Catalyzes the conversion of oxaloacetate (OAA) to phosphoenolpyruvate (PEP), the rate-limiting step in the metabolic pathway

that produces glucose from lactate and other precursors derived from the citric acid cycle.

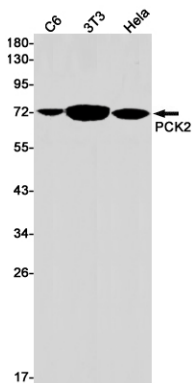
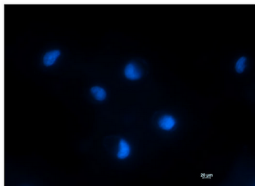
## Research Area

Cardiovascular

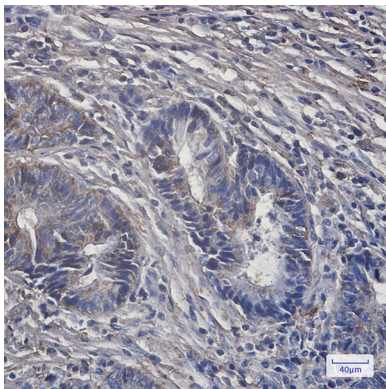
## Image Data



Immunocytochemistry analysis of PCK2 (green) in HT-1080 using PCK2 antibody, and DAPI (blue).



Western blot analysis of PCK2 in C6, 3T3, HeLa lysates using PCK2 antibody.



Immunohistochemistry analysis of paraffin-embedded Human colon cancer tissue using PCK2 antibody. High-pressure and temperature Sodium Citrate pH 6.0 was used for antigen retrieval.