
Product Name: Phospho-Parvin alpha (Ser8) Rabbit Monoclonal Antibody**Catalog #: AMRe02402**

For research use only.

Summary

Description	Recombinant rabbit monoclonal antibody
Host	Rabbit
Application	WB,ICC/IF
Reactivity	Human,Mouse,Rat
Conjugation	Unconjugated
Modification	Phosphorylated
Isotype	IgG
Clonality	Monoclonal
Form	Liquid
Concentration	0.5mg/ml. The concentration of this product may be batch-dependent.
Storage	Aliquot and store at -20°C (valid for 12 months). Avoid freeze/thaw cycles.
Shipping	Ice bags
Buffer	50mM Tris-Glycine(pH 7.4), 0.15M NaCl, 40% Glycerol, 0.01% Sodium azide and 0.05% protective protein
Purification	Affinity Purification

Application

Dilution Ratio	WB 1:500-1:1000,ICC/IF 1:50-1:200
Molecular Weight	Calculated MW: 42 kDa; Observed MW: 42 kDa

Antigen Information

Gene Name	PARVA
Alternative Names	MXRA2; CH-ILKBP
Gene ID	55742
SwissProt ID	Q9NVD7
Immunogen	A synthetic Phosphorylated peptide corresponding to residues target protein

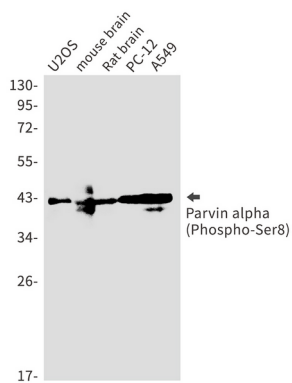
Background

Plays a role in sarcomere organization and in smooth muscle cell contraction. Required for normal development of the embryonic cardiovascular system, and for normal septation of the heart outflow tract. Plays a role in sprouting angiogenesis

and is required for normal adhesion of vascular smooth muscle cells to endothelial cells during blood vessel development . Plays a role in the reorganization of the actin cytoskeleton, formation of lamellipodia and ciliogenesis. Plays a role in the establishment of cell polarity, cell adhesion, cell spreading, and directed cell migration.

Research Area

Image Data



Western blot analysis of Parvin alpha (Phospho-Ser8) in U2OS, mouse brain, rat brain, PC-12, A549 lysates using Phospho-Parvin alpha (Ser8) antibody.