
Product Name: Nrf1 Rabbit Monoclonal antibody**Catalog #: AMRe02355**

For research use only.

Summary

Description	Recombinant rabbit monoclonal antibody
Host	Rabbit
Application	WB,IHC,ICC/IF,IP
Reactivity	Human,Mouse,Rat
Conjugation	Unconjugated
Modification	Unmodified
Isotype	IgG
Clonality	Monoclonal Antibody
Form	Liquid
Concentration	0.5mg/ml. The concentration of this product may be batch-dependent.
Storage	Aliquot and store at -20°C (valid for 12 months). Avoid freeze/thaw cycles.
Shipping	Ice bags
Buffer	50mM Tris-Glycine(pH 7.4), 0.15M NaCl, 40% Glycerol, 0.01% Sodium azide and 0.05% protective protein
Purification	Affinity Purified

Application

Dilution Ratio	WB 1:500-1:1000,IHC 1:50-1:100,ICC/IF 1:50-1:200,IP 1:20-1:50
Molecular Weight	Calculated MW: 54 kDa; Observed MW: 68 kDa

Antigen Information

Gene Name	NRF1 alpha pal; alpha palindromic binding protein; Alpha palindromic-binding protein; Alpha-pal;
Alternative Names	locus control region factor 1; NFE2 related factor 1; NRF-1; Nrf1; NRF1_HUMAN; Nuclear respiratory factor 1; transcription factor 11.
Gene ID	4899
SwissProt ID	Q16656
Immunogen	A synthetic peptide of human NRF1

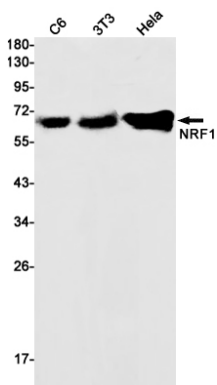
Background

Transcription factor that activates the expression of the EIF2S1 (EIF2-alpha) gene. Links the transcriptional modulation of key metabolic genes to cellular growth and development. Implicated in the control of nuclear genes required for respiration, heme biosynthesis, and mitochondrial DNA transcription and replication.

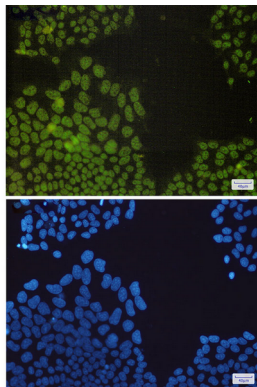
Research Area

Epigenetics and Nuclear Signaling

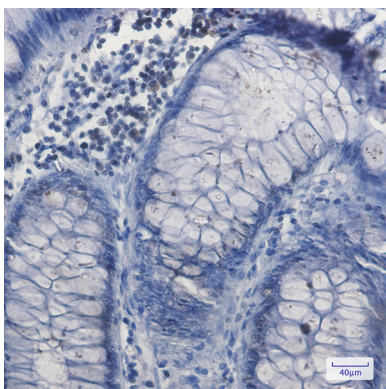
Image Data



Western blot analysis of NRF1 in C6, 3T3, HeLa lysates using Nrf1 antibody.



Immunocytochemistry analysis of NRF1 (green) in HeLa using NRF1 antibody, and DAPI (blue)



Immunohistochemistry analysis of paraffin-embedded Human colon cancer using NRF1 antibody. High-pressure and temperature Sodium Citrate pH 6.0 was used for antigen retrieval.