
Product Name: Nesprin3 Rabbit Monoclonal antibody**Catalog #: AMRe02332**

For research use only.

Summary

Description	Recombinant rabbit monoclonal antibody
Host	Rabbit
Application	WB
Reactivity	Human
Conjugation	Unconjugated
Modification	Unmodified
Isotype	IgG
Clonality	Monoclonal Antibody
Form	Liquid
Concentration	0.18mg/ml. The concentration of this product may be batch-dependent.
Storage	Aliquot and store at -20°C (valid for 12 months). Avoid freeze/thaw cycles.
Shipping	Ice bags
Buffer	50mM Tris-Glycine(pH 7.4), 0.15M NaCl, 40% Glycerol, 0.01% Sodium azide and 0.05% protective protein
Purification	Affinity Purified

Application

Dilution Ratio	WB 1:500-1:1000
Molecular Weight	Calculated MW: 112 kDa; Observed MW: 112 kDa

Antigen Information

Gene Name	SYNE3
Alternative Names	KASH3; NET53; Nesp3; C14orf49; C14orf139; LINC00341; NCRNA00341
Gene ID	161176
SwissProt ID	Q6ZMZ3
Immunogen	Recombinant protein of human Nesprin3

Background

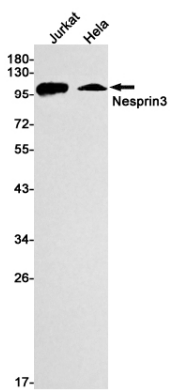
As a component of the LINC (Linker of Nucleoskeleton and Cytoskeleton) complex involved in the connection between the nuclear lamina and the cytoskeleton. The nucleocytoplasmic interactions established by the LINC complex play an important

role in the transmission of mechanical forces across the nuclear envelope and in nuclear movement and positioning. Probable anchoring protein which tethers the nucleus to the cytoskeleton by binding PLEC which can associate with the intermediate filament system. Plays a role in the regulation of aortic epithelial cell morphology, and is required for flow-induced centrosome polarization and directional migration in aortic endothelial cells.

Research Area

Signal Transduction

Image Data



Western blot analysis of Nesprin3 in Jurkat, HeLa lysates using Nesprin3 antibody.