

---

**Product Name: NELFE Rabbit Monoclonal Antibody****Catalog #: AMRe02330**

For research use only.

**Summary**

<b>Description</b>	Recombinant rabbit monoclonal antibody
<b>Host</b>	Rabbit
<b>Application</b>	WB,IHC,IP
<b>Reactivity</b>	Human,Mouse,Rat
<b>Conjugation</b>	Unconjugated
<b>Modification</b>	Unmodified
<b>Isotype</b>	IgG
<b>Clonality</b>	Monoclonal
<b>Form</b>	Liquid
<b>Concentration</b>	0.65mg/ml. The concentration of this product may be batch-dependent.
<b>Storage</b>	Aliquot and store at -20°C (valid for 12 months). Avoid freeze/thaw cycles.
<b>Shipping</b>	Ice bags
<b>Buffer</b>	50mM Tris-Glycine(pH 7.4), 0.15M NaCl, 40% Glycerol, 0.01% Sodium azide and 0.05% protective protein
<b>Purification</b>	Affinity Purification

**Application**

<b>Dilution Ratio</b>	WB 1:500-1:1000,IHC 1:50-1:100,IP 1:20-1:50
<b>Molecular Weight</b>	Calculated MW: 43 kDa; Observed MW: 43 kDa

**Antigen Information**

<b>Gene Name</b>	NELFE
<b>Alternative Names</b>	RD; RDP; RDBP; D6S45; NELF-E
<b>Gene ID</b>	7936
<b>SwissProt ID</b>	P18615
<b>Immunogen</b>	Recombinant protein of human NELFe

**Background**

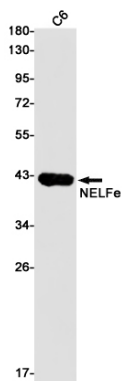
Essential component of the NELF complex, a complex that negatively regulates the elongation of transcription by RNA polymerase II. The NELF complex, which acts via an association with the DSIF complex and causes transcriptional pausing, is

counteracted by the P-TEFb kinase complex. The NELF complex is involved in HIV-1 latency possibly involving recruitment of PCF11 to paused RNA polymerase II. Provides the strongest RNA binding activity of the NELF complex and may initially recruit the NELF complex to RNA. Binds to the HIV-1 TAR RNA which is located in the long terminal repeat (LTR) of HIV-1.

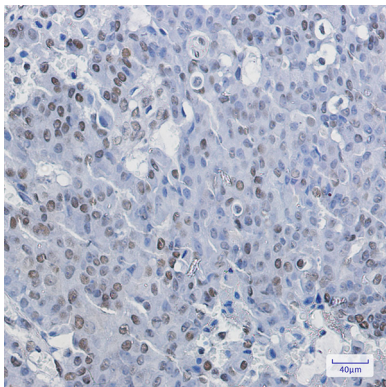
## Research Area

Epigenetics and Nuclear Signaling

## Image Data



Western blot analysis of NELFe in C6 lysates using NELFE antibody.



Immunohistochemistry analysis of paraffin-embedded Human breast cancer using NELFe antibody. High-pressure and temperature Sodium Citrate pH 6.0 was used for antigen retrieval.