

---

**Product Name: NCE2 Rabbit Monoclonal Antibody****Catalog #: AMRe02307**

For research use only.

**Summary**

|                      |  |
|----------------------|--|
| <b>Description</b>   | Recombinant rabbit monoclonal antibody   |
| <b>Host</b>          | Rabbit   |
| <b>Application</b>   | WB,IHC,ICC/IF  |
| <b>Reactivity</b>    | Human  |
| <b>Conjugation</b>   | Unconjugated   |
| <b>Modification</b>  | Unmodified   |
| <b>Isotype</b>       | IgG  |
| <b>Clonality</b>     | Monoclonal   |
| <b>Form</b>          | Liquid   |
| <b>Concentration</b> | 1.18mg/ml. The concentration of this product may be batch-dependent.                                 |
| <b>Storage</b>       | Aliquot and store at -20°C (valid for 12 months). Avoid freeze/thaw cycles.                          |
| <b>Shipping</b>      | Ice bags   |
| <b>Buffer</b>        | 50mM Tris-Glycine(pH 7.4), 0.15M NaCl, 40% Glycerol, 0.01% Sodium azide and 0.05% protective protein |
| <b>Purification</b>  | Affinity Purification  |

**Application**

|                         |  |
|-------------------------|--|
| <b>Dilution Ratio</b>   | WB 1:500-1:1000,IHC 1:50-1:100,ICC/IF 1:50-1:200 |
| <b>Molecular Weight</b> | Calculated MW: 21 kDa; Observed MW: 21 kDa       |

**Antigen Information**

|                          |   |
|--------------------------|---|
| <b>Gene Name</b>         | UBE2F   |
| <b>Alternative Names</b> | NCE2; NEDD8 carrier protein UBE2F; NEDD8 protein ligase UBE2F; NEDD8-conjugating enzyme 2 |
| <b>Gene ID</b>           | 140739  |
| <b>SwissProt ID</b>      | Q969M7  |
| <b>Immunogen</b>         | Recombinant protein of human NCE2   |

**Background**

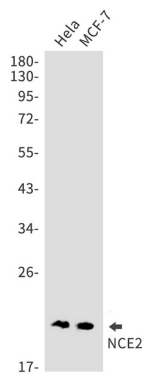
Accepts the ubiquitin-like protein NEDD8 from the UBA3-NAE1 E1 complex and catalyzes its covalent attachment to other

proteins. The specific interaction with the E3 ubiquitin ligase RBX2, but not RBX1, suggests that the RBX2-UBE2F complex neddylates specific target proteins, such as CUL5.

## Research Area

Epigenetics and Nuclear Signaling

## Image Data



Western blot analysis of NCE2 in HeLa, MCF-7 lysates using NCE2 antibody.