
Product Name: NAT1 Rabbit Monoclonal Antibody**Catalog #: AMRe02305**

For research use only.

Summary

Description	Recombinant rabbit monoclonal antibody
Host	Rabbit
Application	WB
Reactivity	Human, Mouse, Rat
Conjugation	Unconjugated
Modification	Unmodified
Isotype	IgG
Clonality	Monoclonal
Form	Liquid
Concentration	0.5mg/ml. The concentration of this product may be batch-dependent.
Storage	Aliquot and store at -20°C (valid for 12 months). Avoid freeze/thaw cycles.
Shipping	Ice bags
Buffer	50mM Tris-Glycine(pH 7.4), 0.15M NaCl, 40% Glycerol, 0.01% Sodium azide and 0.05% protective protein
Purification	Affinity Purification

Application

Dilution Ratio	WB 1:500-1:1000
Molecular Weight	Calculated MW: 34 kDa; Observed MW: 34 kDa

Antigen Information

Gene Name	NAT1
Alternative Names	AAC1; MNAT; NATI; NAT-1
Gene ID	9
SwissProt ID	P18440
Immunogen	A synthetic peptide of human NAT1

Background

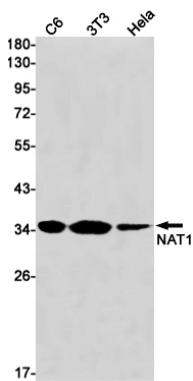
Participates in the detoxification of a plethora of hydrazine and arylamine drugs. Catalyzes the N- or O-acetylation of various arylamine and heterocyclic amine substrates and is able to bioactivate several known carcinogens. Miscellaneous NAT1 was

historically considered to be monomorphic in nature but reports of allelic variations at the NAT1 locus suggest that it is a polymorphically expressed enzyme. Caution The allelic variation Ile-149 designated as NAT1*17 is part of the NAT1*11 allelic variation as reported by the nomenclature committee.

Research Area

Signal Transduction

Image Data



Western blot analysis of NAT1 in C6, 3T3, HeLa lysates using NAT1 antibody.