

---

**Product Name: Myelin Basic Protein Rabbit Monoclonal antibody****Catalog #: AMRe02295**

For research use only.

**Summary**

<b>Description</b>	Recombinant rabbit monoclonal antibody
<b>Host</b>	Rabbit
<b>Application</b>	WB
<b>Reactivity</b>	Mouse,Rat
<b>Conjugation</b>	Unconjugated
<b>Modification</b>	Unmodified
<b>Isotype</b>	IgG
<b>Clonality</b>	Monoclonal Antibody
<b>Form</b>	Liquid
<b>Concentration</b>	0.37mg/ml. The concentration of this product may be batch-dependent.
<b>Storage</b>	Aliquot and store at -20°C (valid for 12 months). Avoid freeze/thaw cycles.
<b>Shipping</b>	Ice bags
<b>Buffer</b>	50mM Tris-Glycine(pH 7.4), 0.15M NaCl, 40% Glycerol, 0.01% Sodium azide and 0.05% protective protein
<b>Purification</b>	Affinity Purified

**Application**

<b>Dilution Ratio</b>	WB 1:500-1:1000
<b>Molecular Weight</b>	Calculated MW: 33 kDa; Observed MW: 18 kDa

**Antigen Information**

<b>Gene Name</b>	MBP
<b>Alternative Names</b>	Myelin membrane encephalitogenic protein; Myelin A1 protein
<b>Gene ID</b>	4155
<b>SwissProt ID</b>	P02686
<b>Immunogen</b>	A synthetic peptide of human Myelin Basic Protein

**Background**

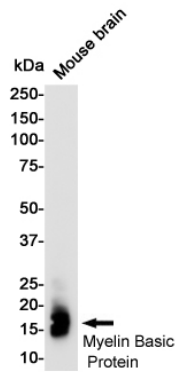
MBP belongs to the myelin basic protein family. The classic group of MBP isoforms (isoform 4-isoform 14) are the most abundant protein components of the myelin membrane in the CNS. They have a role in both its formation and stabilization. The

smaller isoforms might have an important role in remyelination of denuded axons in multiple sclerosis.

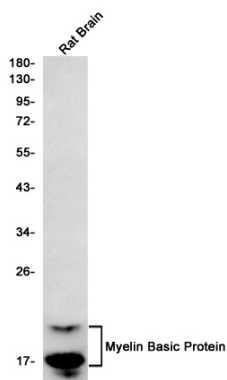
## Research Area

Neuroscience

## Image Data



Western blot analysis of Myelin Basic Protein in mouse Brain lysates using Myelin Basic Protein antibody.



Western blot analysis of Myelin Basic Protein in rat Brain lysates using Myelin Basic Protein antibody.