
Product Name: Myelin Basic Protein Rabbit Monoclonal Antibody**Catalog #: AMRe02294**

For research use only.

Summary

| | |
|----------------------|--|
| Description | Recombinant rabbit monoclonal antibody |
| Host | Rabbit |
| Application | WB |
| Reactivity | Human,Rat,Hamster |
| Conjugation | Unconjugated |
| Modification | Unmodified |
| Isotype | IgG |
| Clonality | Monoclonal |
| Form | Liquid |
| Concentration | 0.5mg/ml. The concentration of this product may be batch-dependent. |
| Storage | Aliquot and store at -20°C (valid for 12 months). Avoid freeze/thaw cycles. |
| Shipping | Ice bags |
| Buffer | 50mM Tris-Glycine(pH 7.4), 0.15M NaCl, 40% Glycerol, 0.01% Sodium azide and 0.05% protective protein |
| Purification | Affinity Purification |

Application

| | |
|-------------------------|--|
| Dilution Ratio | WB 1:500-1:1000 |
| Molecular Weight | Calculated MW: 33 kDa; Observed MW: 18 kDa |

Antigen Information

| | |
|--------------------------|---|
| Gene Name | MBP |
| Alternative Names | Myelin membrane encephalitogenic protein; Myelin A1 protein |
| Gene ID | 4155 |
| SwissProt ID | P02686 |
| Immunogen | Recombinant protein of human Myelin Basic Protein |

Background

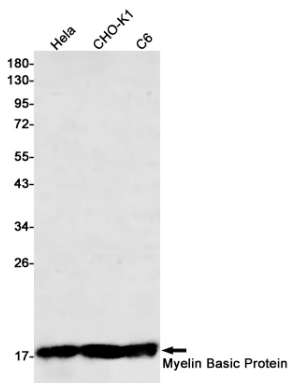
MBP belongs to the myelin basic protein family. The classic group of MBP isoforms (isoform 4-isoform 14) are the most abundant protein components of the myelin membrane in the CNS. They have a role in both its formation and stabilization. The

smaller isoforms might have an important role in remyelination of denuded axons in multiple sclerosis.

Research Area

Neuroscience

Image Data



Western blot analysis of Myelin Basic Protein in HeLa, CHO-K1, C6 lysates using Myelin Basic Protein antibody.