

Product Name: alpha Skeletal Muscle Actin Rabbit Monoclonal Antibody**Catalog #:** AMRe02291

For research use only.

Summary

| | |
|----------------------|--|
| Description | Recombinant rabbit monoclonal antibody |
| Host | Rabbit |
| Application | WB,IHC,ICC/IF,IP |
| Reactivity | Human,Rat |
| Conjugation | Unconjugated |
| Modification | Unmodified |
| Isotype | IgG |
| Clonality | Monoclonal |
| Form | Liquid |
| Concentration | 0.39mg/ml. The concentration of this product may be batch-dependent. |
| Storage | Aliquot and store at -20°C (valid for 12 months). Avoid freeze/thaw cycles. |
| Shipping | Ice bags |
| Buffer | 50mM Tris-Glycine(pH 7.4), 0.15M NaCl, 40% Glycerol, 0.01% Sodium azide and 0.05% protective protein |
| Purification | Affinity Purification |

Application

| | |
|-------------------------|---|
| Dilution Ratio | WB 1:500-1:1000,IHC 1:50-1:100,ICC/IF 1:50-1:200,IP 1:20-1:50 |
| Molecular Weight | Calculated MW: 42 kDa; Observed MW: 42 kDa |

Antigen Information

| | |
|--------------------------|--|
| Gene Name | ACTA1 |
| Alternative Names | ACTA1; ACTA; Actin; alpha skeletal muscle; Alpha-actin-1 |
| Gene ID | 58 |
| SwissProt ID | P68133 |
| Immunogen | A synthetic peptide of human Actin |

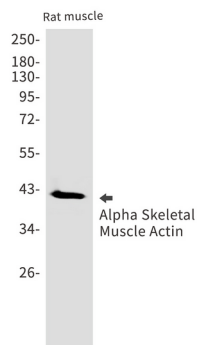
Background

Actins are highly conserved proteins that are involved in various types of cell motility and are ubiquitously expressed in all eukaryotic cells.

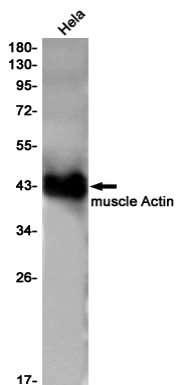
Research Area

Signal Transduction

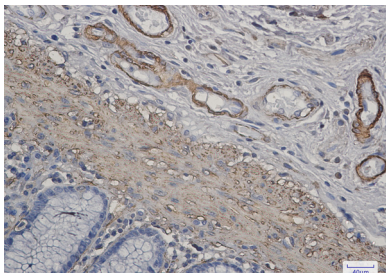
Image Data



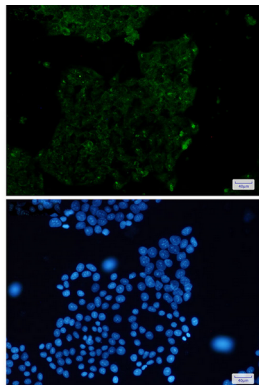
Western blot analysis of Alpha Skeletal Muscle in rat muscle lysates using alpha Skeletal Muscle Actin antibody.



Western blot analysis of muscle Actin in Hela lysates using muscle Actin antibody.



Immunohistochemistry analysis of paraffin-embedded Human colon cancer using muscle Actin antibody. High-pressure and temperature Sodium Citrate pH 6.0 was used for antigen retrieval.



Immunocytochemistry analysis of muscle Actin(green) in Hela using muscle Actin antibody, and DAPI(blue).

