

Product Name: MTH1 Rabbit Monoclonal Antibody**Catalog #: AMRe02283**

For research use only.

Summary

Description	Recombinant rabbit monoclonal antibody
Host	Rabbit
Application	WB, ICC/IF, IP
Reactivity	Human
Conjugation	Unconjugated
Modification	Unmodified
Isotype	IgG
Clonality	Monoclonal
Form	Liquid
Concentration	0.65mg/ml. The concentration of this product may be batch-dependent.
Storage	Aliquot and store at -20°C (valid for 12 months). Avoid freeze/thaw cycles.
Shipping	Ice bags
Buffer	50mM Tris-Glycine(pH 7.4), 0.15M NaCl, 40% Glycerol, 0.01% Sodium azide and 0.05% protective protein
Purification	Affinity Purification

Application

Dilution Ratio	WB 1:500-1:1000, ICC/IF 1:50-1:200, IP 1:20-1:50
Molecular Weight	Calculated MW: 18 kDa; Observed MW: 18 kDa

Antigen Information

Gene Name	NUDT1
Alternative Names	MTH1; NUDT 1
Gene ID	4521
SwissProt ID	P36639
Immunogen	Recombinant protein of human MTH1

Background

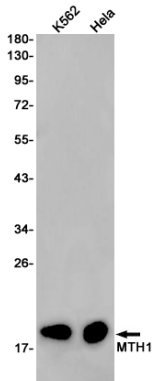
Antimutagenic. Acts as a sanitizing enzyme for oxidized nucleotide pools, thus suppressing cell dysfunction and death induced by oxidative stress. Hydrolyzes 8-oxo-dGTP, 8-oxo-dATP and 2-OH-dATP, thus preventing misincorporation of oxidized purine

nucleoside triphosphates into DNA and subsequently preventing A:T to C:G and G:C to T:A transversions.

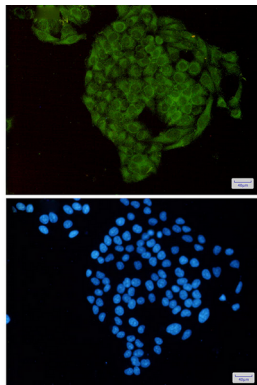
Research Area

Epigenetics and Nuclear Signaling

Image Data



Western blot analysis of MTH1 in K562, HeLa lysates using MTH1 antibody.



Immunocytochemistry analysis of MTH1(green) in HeLa using MTH1 antibody, and DAPI(blue)