

Product Name: MMP2 Rabbit Monoclonal Antibody**Catalog #: AMRe02264**

For research use only.

Summary

Description	Recombinant rabbit monoclonal antibody
Host	Rabbit
Application	WB, ICC/IF
Reactivity	Mouse
Conjugation	Unconjugated
Modification	Unmodified
Isotype	IgG
Clonality	Monoclonal
Form	Liquid
Concentration	
Storage	Aliquot and store at -20°C (valid for 12 months). Avoid freeze/thaw cycles.
Shipping	Ice bags
Buffer	50mM Tris-Glycine(pH 7.4), 0.15M NaCl, 40% Glycerol, 0.01% Sodium azide and 0.05% protective protein
Purification	Affinity Purification

Application

Dilution Ratio	WB 1:500-1:1000, ICC/IF 1:50-1:200
Molecular Weight	Calculated MW: 74 kDa; Observed MW: 72,64 kDa

Antigen Information

Gene Name	MMP2
Alternative Names	MMP2; CLG4A; 72 kDa type IV collagenase; 72 kDa gelatinase; Gelatinase A; Matrix metalloproteinase-2; MMP-2; TBE-1
Gene ID	4313
SwissProt ID	P08253
Immunogen	A synthetic peptide of human MMP2

Background

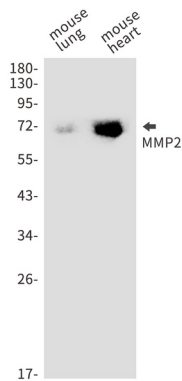
MMP2 Ubiquitous metalloproteinase that is involved in diverse functions such as remodeling of the vasculature,

angiogenesis, tissue repair, tumor invasion, inflammation, and atherosclerotic plaque rupture. As well as degrading extracellular matrix proteins, can also act on several nonmatrix proteins such as big endothelial 1 and beta-type CGRP promoting vasoconstriction. Also cleaves KISS at a Gly-[Leu bond. Appears to have a role in myocardial cell death pathways.

Research Area

Cardiovascular

Image Data



Western blot analysis of MMP2 in mouse lung, mouse heart lysates using MMP2 antibody.