
Product Name: Mesothelin Rabbit Monoclonal Antibody**Catalog #: AMRe02247**

For research use only.

Summary

Description	Recombinant rabbit monoclonal antibody
Host	Rabbit
Application	WB,IP
Reactivity	Mouse
Conjugation	Unconjugated
Modification	Unmodified
Isotype	IgG
Clonality	Monoclonal
Form	Liquid
Concentration	1.18mg/ml. The concentration of this product may be batch-dependent.
Storage	Aliquot and store at -20°C (valid for 12 months). Avoid freeze/thaw cycles.
Shipping	Ice bags
Buffer	50mM Tris-Glycine(pH 7.4), 0.15M NaCl, 40% Glycerol, 0.01% Sodium azide and 0.05% protective protein
Purification	Affinity Purification

Application

Dilution Ratio	WB 1:500-1:1000,IP 1:20-1:50
Molecular Weight	Calculated MW: 70 kDa; Observed MW: 40,70 kDa

Antigen Information

Gene Name	Msln
Alternative Names	Pre-pro-megakaryocyte-potentiating factor; MPF
Gene ID	56047.0
SwissProt ID	Q61468
Immunogen	Recombinant protein of mouse Mesothelin

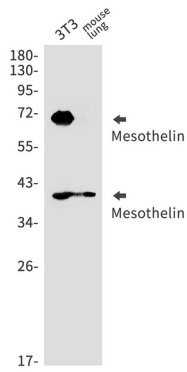
Background

Membrane-anchored forms may play a role in cellular adhesion.

Research Area

Tags & Cell Markers

Image Data



Western blot analysis of Mesothelin in 3T3, mouse lung lysates using Mesothelin antibody.