
Product Name: Phospho-MEK1 (Ser298) Rabbit Monoclonal Antibody**Catalog #: AMRe02243**

For research use only.

Summary

Description	Recombinant rabbit monoclonal antibody
Host	Rabbit
Application	WB,ICC/IF
Reactivity	Human,Mouse,Rat
Conjugation	Unconjugated
Modification	Phosphorylated
Isotype	IgG
Clonality	Monoclonal
Form	Liquid
Concentration	0.5mg/ml. The concentration of this product may be batch-dependent.
Storage	Aliquot and store at -20°C (valid for 12 months). Avoid freeze/thaw cycles.
Shipping	Ice bags
Buffer	50mM Tris-Glycine(pH 7.4), 0.15M NaCl, 40% Glycerol, 0.01% Sodium azide and 0.05% protective protein
Purification	Affinity Purification

Application

Dilution Ratio	WB 1:500-1:1000,ICC/IF 1:50-1:200
Molecular Weight	Calculated MW: 43 kDa; Observed MW: 43 kDa

Antigen Information

Gene Name	MAP2K1
Alternative Names	MAP2K1; MEK1; PRKMK1; Dual specificity mitogen-activated protein kinase kinase 1; MAP kinase kinase 1; MAPKK 1; MKK1; ERK activator kinase 1; MAPK/ERK kinase 1; MEK 1
Gene ID	5604
SwissProt ID	Q02750
Immunogen	A synthetic Phosphorylated peptide corresponding to residues target protein

Background

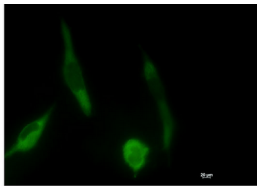
The protein encoded by this gene is a member of the dual specificity protein kinase family, which acts as a mitogen-activated

protein (MAP) kinase kinase. MAP kinases, also known as extracellular signal-regulated kinases (ERKs), act as an integration point for multiple biochemical signals.

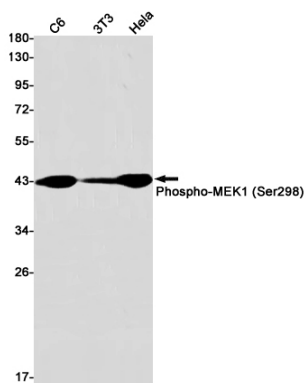
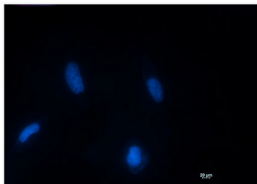
Research Area

Signal Transduction

Image Data



Immunocytochemistry analysis of Phospho-MEK1 (Ser298) (green) in HT-1080 using Phospho-MEK1 (Ser298) antibody, and DAPI (blue).



Western blot analysis of Phospho-MEK1 (Ser298) in C6, 3T3, HeLa lysates using Phospho-MEK1 (Ser298) antibody.