
Product Name: ME2 Rabbit Monoclonal Antibody**Catalog #: AMRe02240**

For research use only.

Summary

Description	Recombinant rabbit monoclonal antibody
Host	Rabbit
Application	WB,ICC/IF
Reactivity	Human
Conjugation	Unconjugated
Modification	Unmodified
Isotype	IgG
Clonality	Monoclonal
Form	Liquid
Concentration	0.64mg/ml. The concentration of this product may be batch-dependent.
Storage	Aliquot and store at -20°C (valid for 12 months). Avoid freeze/thaw cycles.
Shipping	Ice bags
Buffer	50mM Tris-Glycine(pH 7.4), 0.15M NaCl, 40% Glycerol, 0.01% Sodium azide and 0.05% protective protein
Purification	Affinity Purification

Application

Dilution Ratio	WB 1:500-1:1000,ICC/IF 1:50-1:200
Molecular Weight	Calculated MW: 65 kDa; Observed MW: 65 kDa

Antigen Information

Gene Name	ME2
Alternative Names	ODS1
Gene ID	4200
SwissProt ID	P23368
Immunogen	A synthetic peptide of human ME2

Background

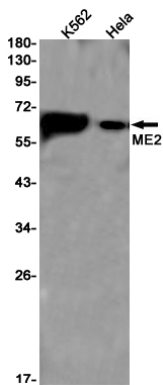
This gene encodes a mitochondrial NAD-dependent malic enzyme, a homotetrameric protein, that catalyzes the oxidative decarboxylation of malate to pyruvate. It had previously been weakly linked to a syndrome known as Friedreich ataxia that has

since been shown to be the result of mutation in a completely different gene. Certain single-nucleotide polymorphism haplotypes of this gene have been shown to increase the risk for idiopathic generalized epilepsy. Alternatively spliced transcript variants encoding different isoforms found for this gene.

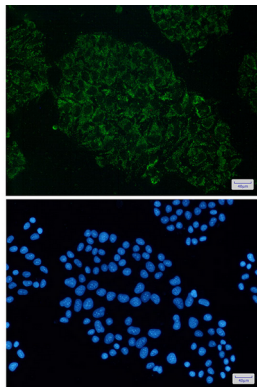
Research Area

Signal Transduction

Image Data



Western blot analysis of ME2 in K562, HeLa lysates using ME2 antibody.



Immunocytochemistry analysis of ME2(green) in HeLa using ME2 antibody, and DAPI(blue)