

Product Name: MAPK6 Rabbit Monoclonal Antibody**Catalog #: AMRe02229**

For research use only.

Summary

Description	Recombinant rabbit monoclonal antibody
Host	Rabbit
Application	WB,IHC,IP
Reactivity	Human,Mouse
Conjugation	Unconjugated
Modification	Unmodified
Isotype	IgG
Clonality	Monoclonal
Form	Liquid
Concentration	0.64mg/ml. The concentration of this product may be batch-dependent.
Storage	Aliquot and store at -20°C (valid for 12 months). Avoid freeze/thaw cycles.
Shipping	Ice bags
Buffer	50mM Tris-Glycine(pH 7.4), 0.15M NaCl, 40% Glycerol, 0.01% Sodium azide and 0.05% protective protein
Purification	Affinity Purification

Application

Dilution Ratio	WB 1:500-1:1000,IHC 1:50-1:100,IP 1:20-1:50
Molecular Weight	Calculated MW: 83 kDa; Observed MW: 105 kDa

Antigen Information

Gene Name	MAPK6
Alternative Names	ERK3; PRKM6; p97MAPK; HsT17250; ERK-3
Gene ID	5597
SwissProt ID	Q16659
Immunogen	A synthetic peptide of human MAPK6

Background

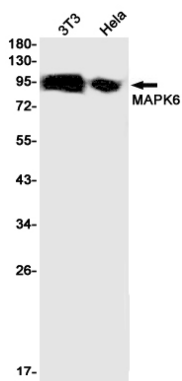
Atypical MAPK protein. Phosphorylates microtubule-associated protein 2 (MAP2) and MAPKAPK5. The precise role of the complex formed with MAPKAPK5 is still unclear, but the complex follows a complex set of phosphorylation events: upon

interaction with atypical MAPKAPK5, ERK3/MAPK6 is phosphorylated at Ser-189 and then mediates phosphorylation and activation of MAPKAPK5, which in turn phosphorylates ERK3/MAPK6. May promote entry in the cell cycle .

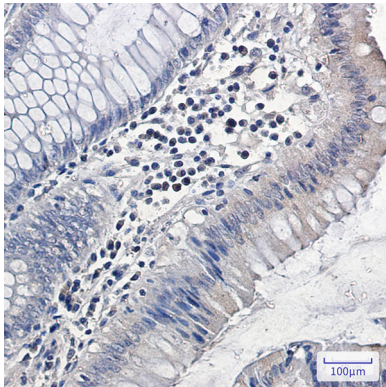
Research Area

Signal Transduction

Image Data



Western blot analysis of MAPK6 in 3T3, HeLa lysates using MAPK6 antibody.



Immunohistochemistry analysis of paraffin-embedded Human colon cancer using MAPK6/ERK3 antibody. High-pressure and temperature Sodium Citrate pH 6.0 was used for antigen retrieval.