
Product Name: LXR alpha Rabbit Monoclonal Antibody**Catalog #: AMRe02223**

For research use only.

Summary

Description	Recombinant rabbit monoclonal antibody
Host	Rabbit
Application	WB,IHC
Reactivity	Human,Rat
Conjugation	Unconjugated
Modification	Unmodified
Isotype	IgG
Clonality	Monoclonal
Form	Liquid
Concentration	0.53mg/ml. The concentration of this product may be batch-dependent.
Storage	Aliquot and store at -20°C (valid for 12 months). Avoid freeze/thaw cycles.
Shipping	Ice bags
Buffer	50mM Tris-Glycine(pH 7.4), 0.15M NaCl, 40% Glycerol, 0.01% Sodium azide and 0.05% protective protein
Purification	Affinity Purification

Application

Dilution Ratio	WB 1:500-1:1000,IHC 1:50-1:100
Molecular Weight	Calculated MW: 50 kDa; Observed MW: 50 kDa

Antigen Information

Gene Name	NR1H3
Alternative Names	NR1H3; LXRA; Oxysterols receptor LXR-alpha; Liver X receptor alpha; Nuclear receptor subfamily 1 group H member 3
Gene ID	10062
SwissProt ID	Q13133
Immunogen	A synthetic peptide of human LXR alpha

Background

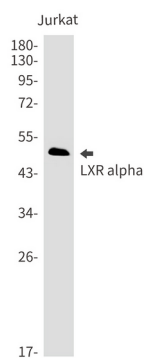
Orphan receptor. Interaction with RXR shifts RXR from its role as a silent DNA-binding partner to an active ligand-binding

subunit in mediating retinoid responses through target genes defined by LXRES. LXRES are DR4-type response elements characterized by direct repeats of two similar hexanuclotide half-sites spaced by four nucleotides. Plays an important role in the regulation of cholesterol homeostasis, regulating cholesterol uptake through MYLIP-dependent ubiquitination of LDLR, VLDLR and LRP8.

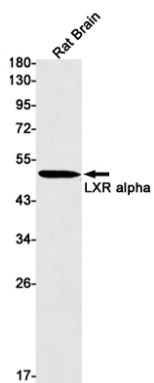
Research Area

Cardiovascular

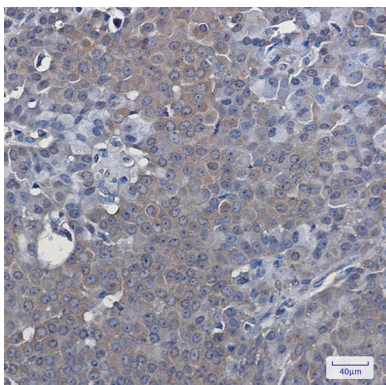
Image Data



Western blot analysis of LXR alpha in Jurkat lysates using LXR alpha antibody.



Western blot analysis of LXR alpha in rat Brain lysates using LXR alpha antibody.



Immunohistochemistry analysis of paraffin-embedded Human breast cancer using LXR alpha antibody. High-pressure and temperature Sodium Citrate pH 6.0 was used for antigen retrieval.