

Product Name: LRRC15 Rabbit Monoclonal Antibody
Catalog #: AMRe02221



Summary

Production Name	LRRC15 Rabbit Monoclonal Antibody
Description	Rabbit Monoclonal antibody
Host	Rabbit
Application	WB
Reactivity	Mouse,Rat

Performance

Conjugation	Unconjugated
Modification	Unmodified
Isotype	IgG
Clonality	Monoclonal
Form	Liquid
Storage	Store at 4°C short term. Aliquot and store at -20°C long term. Avoid freeze/thaw cycles.
Buffer	50mM Tris-Glycine(pH 7.4), 0.15M NaCl, 40% Glycerol, 0.01% Sodium azide and 0.05% protective protein
Purification	Affinity Purification

Immunogen

Gene Name	LRRC15
Alternative Names	LIB
Gene ID	131578
SwissProt ID	Q8TF66.

Application

Dilution Ratio	WB: 1:500-1:1000
Molecular Weight	Calculated MW: 64 kDa; Observed MW: 64 kDa

Background

Enables collagen binding activity; fibronectin binding activity; and laminin binding activity. Involved in negative regulation

Product Name: LRRC15 Rabbit Monoclonal Antibody
Catalog #: AMRe02221

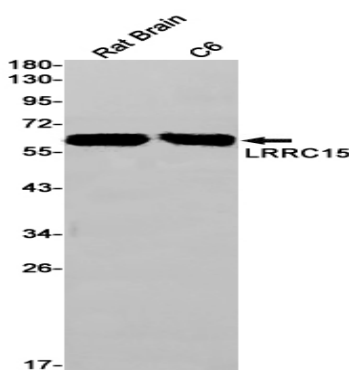


of protein localization to plasma membrane; positive regulation of cell migration; and receptor-mediated virion attachment to host cell. Located in extracellular exosome. Colocalizes with collagen-containing extracellular matrix.

Research Area

Neuroscience

Image Data



Western blot analysis of LRRC15 in rat Brain, C6 lysates using LRRC15 antibody.

Note

For research use only.