

**Product Name: Proteasome beta 8 Rabbit Monoclonal Antibody****Catalog #: AMRe02217**

For research use only.

**Summary**

<b>Description</b>	Recombinant rabbit monoclonal antibody
<b>Host</b>	Rabbit
<b>Application</b>	WB, ICC/IF, IP
<b>Reactivity</b>	Human, Mouse
<b>Conjugation</b>	Unconjugated
<b>Modification</b>	Unmodified
<b>Isotype</b>	IgG
<b>Clonality</b>	Monoclonal
<b>Form</b>	Liquid
<b>Concentration</b>	0.67mg/ml. The concentration of this product may be batch-dependent.
<b>Storage</b>	Aliquot and store at -20°C (valid for 12 months). Avoid freeze/thaw cycles.
<b>Shipping</b>	Ice bags
<b>Buffer</b>	50mM Tris-Glycine(pH 7.4), 0.15M NaCl, 40% Glycerol, 0.01% Sodium azide and 0.05% protective protein
<b>Purification</b>	Affinity Purification

**Application**

<b>Dilution Ratio</b>	WB 1:500-1:1000, ICC/IF 1:50-1:200, IP 1:20-1:50
<b>Molecular Weight</b>	Calculated MW: 30 kDa; Observed MW: 23 kDa

**Antigen Information**

<b>Gene Name</b>	PSMB8 PSMB8; LMP7; PSMB5i; RING10; Y2; Proteasome subunit beta type-8; Low molecular mass
<b>Alternative Names</b>	protein 7; Macropain subunit C13; Multicatalytic endopeptidase complex subunit C13; Proteasome component C13; Proteasome subunit beta-5i; Really interesting
<b>Gene ID</b>	5696
<b>SwissProt ID</b>	P28062
<b>Immunogen</b>	A synthetic peptide of human LMP7

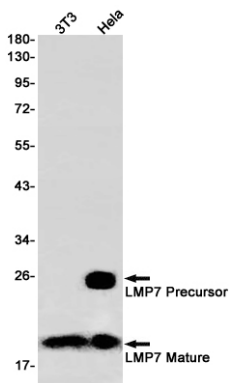
**Background**

The proteasome is a multicatalytic proteinase complex which is characterized by its ability to cleave peptides with Arg, Phe, Tyr, Leu, and Glu adjacent to the leaving group at neutral or slightly basic pH. The proteasome has an ATP-dependent proteolytic activity.

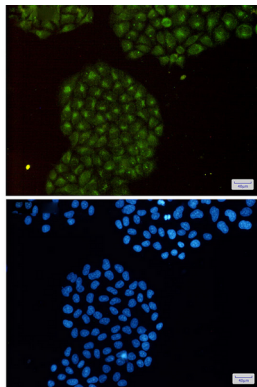
## Research Area

Cell Biology

## Image Data



Western blot analysis of LMP7 in 3T3, HeLa lysates using Proteasome beta 8 antibody.



Immunocytochemistry analysis of LMP7(green) in HeLa using LMP7 antibody, and DAPI(blue)