
Product Name: Laminin gamma 1 Rabbit Monoclonal Antibody**Catalog #: AMRe02204**

For research use only.

Summary

Description	Recombinant rabbit monoclonal antibody
Host	Rabbit
Application	WB,IHC,IP
Reactivity	Human,Mouse,Rat
Conjugation	Unconjugated
Modification	Unmodified
Isotype	IgG
Clonality	Monoclonal
Form	Liquid
Concentration	0.36mg/ml. The concentration of this product may be batch-dependent.
Storage	Aliquot and store at -20°C (valid for 12 months). Avoid freeze/thaw cycles.
Shipping	Ice bags
Buffer	50mM Tris-Glycine(pH 7.4), 0.15M NaCl, 40% Glycerol, 0.01% Sodium azide and 0.05% protective protein
Purification	Affinity Purification

Application

Dilution Ratio	WB 1:500-1:1000,IHC 1:50-1:100,IP 1:20-1:50
Molecular Weight	Calculated MW: 178 kDa; Observed MW: 220-250 kDa

Antigen Information

Gene Name	LAMC1 LAMC1; LAMB2; Laminin subunit gamma-1; Laminin B2 chain; Laminin-1 subunit gamma;
Alternative Names	Laminin-10 subunit gamma; Laminin-11 subunit gamma; Laminin-2 subunit gamma; Laminin-3 subunit gamma; Laminin-4 subunit gamma; Laminin-6 subunit gamma; Lamini
Gene ID	3915
SwissProt ID	P11047
Immunogen	Recombinant protein of human Laminin gamma 1

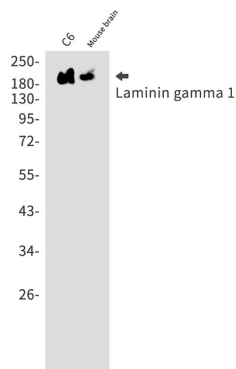
Background

Binding to cells via a high affinity receptor, laminin is thought to mediate the attachment, migration and organization of cells into tissues during embryonic development by interacting with other extracellular matrix components.

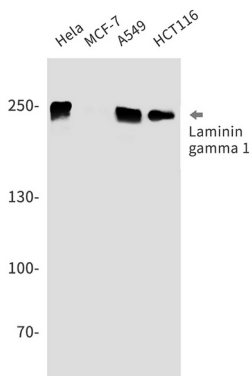
Research Area

Cell Biology

Image Data



Western blot analysis of Laminin gamma 1 in C6, mouse brain lysates using Laminin gamma 1 antibody.



Western blot analysis of Laminin gamma 1 in HeLa, MCF-7, A549, HCT116 lysates using Laminin gamma 1 antibody.