
Product Name: Lactate Dehydrogenase C Rabbit Monoclonal Antibody**Catalog #: AMRe02199**

For research use only.

Summary

Description	Recombinant rabbit monoclonal antibody
Host	Rabbit
Application	WB
Reactivity	Human
Conjugation	Unconjugated
Modification	Unmodified
Isotype	IgG
Clonality	Monoclonal
Form	Liquid
Concentration	0.5mg/ml. The concentration of this product may be batch-dependent.
Storage	Aliquot and store at -20°C (valid for 12 months). Avoid freeze/thaw cycles.
Shipping	Ice bags
Buffer	50mM Tris-Glycine(pH 7.4), 0.15M NaCl, 40% Glycerol, 0.01% Sodium azide and 0.05% protective protein
Purification	Affinity Purification

Application

Dilution Ratio	WB 1:500-1:1000
Molecular Weight	Calculated MW: 36 kDa; Observed MW: 36 kDa

Antigen Information

Gene Name	LDHC
Alternative Names	CT32; LDH3; LDHX
Gene ID	3948
SwissProt ID	P07864
Immunogen	A synthetic peptide of human Lactate Dehydrogenase C

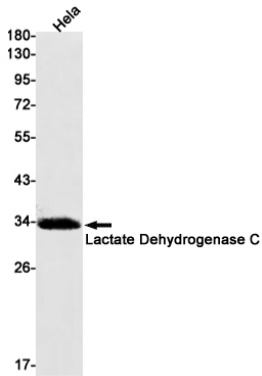
Background

Possible role in sperm motility.

Research Area

Signal Transduction

Image Data



Western blot analysis of Lactate Dehydrogenase C in HeLa lysates using Lactate Dehydrogenase C antibody.