

Product Name: L1CAM Rabbit Monoclonal Antibody
Catalog #: AMRe02198



Summary

Production Name	L1CAM Rabbit Monoclonal Antibody
Description	Rabbit Monoclonal antibody
Host	Rabbit
Application	WB,IHC-P
Reactivity	Human

Performance

Conjugation	Unconjugated
Modification	Unmodified
Isotype	IgG
Clonality	Monoclonal
Form	Liquid
Storage	Store at 4°C short term. Aliquot and store at -20°C long term. Avoid freeze/thaw cycles.
Buffer	50mM Tris-Glycine(pH 7.4), 0.15M NaCl, 40% Glycerol, 0.01% Sodium azide and 0.05% protective protein
Purification	Affinity Purification

Immunogen

Gene Name	L1CAM
Alternative Names	L1CAM; CAML1; MIC5; Neural cell adhesion molecule L1; N-CAM-L1; NCAM-L1; CD antigen CD171
Gene ID	3897
SwissProt ID	P32004.

Application

Dilution Ratio	WB: 1:500-1:1000 IHC: 1:50-1:100
Molecular Weight	Calculated MW: 140 kDa; Observed MW: 140 kDa

Background

Product Name: L1CAM Rabbit Monoclonal Antibody
Catalog #: AMRe02198

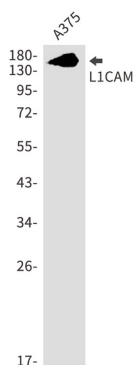


Cell adhesion molecule with an important role in the development of the nervous system. Involved in neuron-neuron adhesion, neurite fasciculation, outgrowth of neurites, etc. Binds to axonin on neurons.

Research Area

Signal Transduction

Image Data



Western blot analysis of L1CAM in A375 lysates using L1CAM antibody.

Note

For research use only.