

Product Name: KDM1A Rabbit Monoclonal antibody**Catalog #: AMRe02190**

For research use only.

Summary

Description	Recombinant rabbit monoclonal antibody
Host	Rabbit
Application	WB,ICC/IF,IP
Reactivity	Human,Hamster,Rat
Conjugation	Unconjugated
Modification	Unmodified
Isotype	IgG
Clonality	Monoclonal Antibody
Form	Liquid
Concentration	0.13mg/ml. The concentration of this product may be batch-dependent.
Storage	Aliquot and store at -20°C (valid for 12 months). Avoid freeze/thaw cycles.
Shipping	Ice bags
Buffer	50mM Tris-Glycine(pH 7.4), 0.15M NaCl, 40% Glycerol, 0.01% Sodium azide and 0.05% protective protein
Purification	Affinity Purified

Application

Dilution Ratio	WB 1:500-1:1000,ICC/IF 1:50-1:200,IP 1:20-1:50
Molecular Weight	Calculated MW: 93 kDa; Observed MW: 110 kDa

Antigen Information

Gene Name	KDM1A KDM1A; AOF2; KDM1; KIAA0601; LSD1; Lysine-specific histone demethylase 1A; BRAF35-
Alternative Names	HDAC complex protein BHC110; Flavin-containing amine oxidase domain-containing protein 2
Gene ID	23028
SwissProt ID	O60341
Immunogen	A synthetic peptide of human KDM1/LSD1

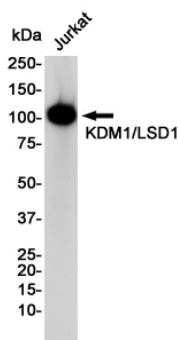
Background

Histone demethylase that demethylates both 'Lys-4' (H3K4me) and 'Lys-9' (H3K9me) of histone H3, thereby acting as a coactivator or a corepressor, depending on the context. Acts by oxidizing the substrate by FAD to generate the corresponding imine that is subsequently hydrolyzed. Acts as a corepressor by mediating demethylation of H3K4me, a specific tag for epigenetic transcriptional activation. Demethylates both mono- (H3K4me1) and di-methylated (H3K4me2) H3K4me. May play a role in the repression of neuronal genes.

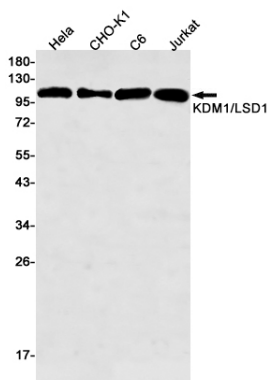
Research Area

Epigenetics and Nuclear Signaling

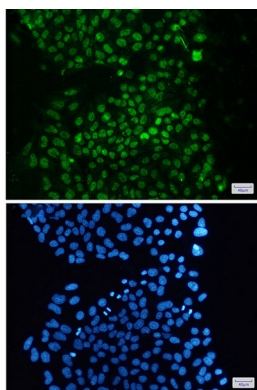
Image Data



Western blot analysis of KDM1/LSD1 in Jurkat lysates using KDM1A antibody.



Western blot analysis of KDM1/LSD1 in HeLa, CHO-K1, C6, Jurkat lysates using KDM1/LSD1 antibody.



Immunocytochemistry analysis of KDM1/LSD1(green) in HeLa using KDM1/LSD1 antibody, and DAPI(blue)