

Product Name: KCTD9 Rabbit Monoclonal Antibody**Catalog #: AMRe02189**

For research use only.

Summary

Description	Recombinant rabbit monoclonal antibody
Host	Rabbit
Application	WB, ICC/IF
Reactivity	Human
Conjugation	Unconjugated
Modification	Unmodified
Isotype	IgG
Clonality	Monoclonal
Form	Liquid
Concentration	0.3mg/ml. The concentration of this product may be batch-dependent.
Storage	Aliquot and store at -20°C (valid for 12 months). Avoid freeze/thaw cycles.
Shipping	Ice bags
Buffer	50mM Tris-Glycine(pH 7.4), 0.15M NaCl, 40% Glycerol, 0.01% Sodium azide and 0.05% protective protein
Purification	Affinity Purification

Application

Dilution Ratio	WB 1:500-1:1000, ICC/IF 1:50-1:200
Molecular Weight	Calculated MW: 43 kDa; Observed MW: 43 kDa

Antigen Information

Gene Name	KCTD9
Alternative Names	BTB/POZ domain-containing protein KCTD9
Gene ID	54793
SwissProt ID	Q7L273
Immunogen	A synthetic peptide of human KCTD9

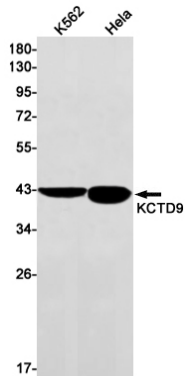
Background

Substrate-specific adapter of a BCR (BTB-CUL3-RBX1) E3 ubiquitin-protein ligase complex, which mediates the ubiquitination of target proteins, leading to their degradation by the proteasome.

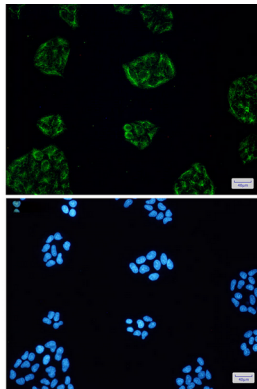
Research Area

Neuroscience

Image Data



Western blot analysis of KCTD9 in K562, HeLa lysates using KCTD9 antibody.



Immunocytochemistry analysis of KCTD9(green) in HeLa using KCTD9 antibody, and DAPI(blue)