

---

**Product Name: KAT1 Rabbit Monoclonal antibody****Catalog #: AMRe02186**

For research use only.

**Summary**

<b>Description</b>	Recombinant rabbit monoclonal antibody
<b>Host</b>	Rabbit
<b>Application</b>	WB,IHC,ICC/IF,IP
<b>Reactivity</b>	Human,Mouse,Rat
<b>Conjugation</b>	Unconjugated
<b>Modification</b>	Unmodified
<b>Isotype</b>	IgG
<b>Clonality</b>	Monoclonal Antibody
<b>Form</b>	Liquid
<b>Concentration</b>	0.13mg/ml. The concentration of this product may be batch-dependent.
<b>Storage</b>	Aliquot and store at -20°C (valid for 12 months). Avoid freeze/thaw cycles.
<b>Shipping</b>	Ice bags
<b>Buffer</b>	50mM Tris-Glycine(pH 7.4), 0.15M NaCl, 40% Glycerol, 0.01% Sodium azide and 0.05% protective protein
<b>Purification</b>	Affinity Purified

**Application**

<b>Dilution Ratio</b>	WB 1:500-1:1000,IHC 1:50-1:100,ICC/IF 1:50-1:200,IP 1:20-1:50
<b>Molecular Weight</b>	Calculated MW: 50 kDa; Observed MW: 45 kDa

**Antigen Information**

<b>Gene Name</b>	HAT1
<b>Alternative Names</b>	hat1; KAT1
<b>Gene ID</b>	8520
<b>SwissProt ID</b>	O14929
<b>Immunogen</b>	Recombinant protein of human KAT1

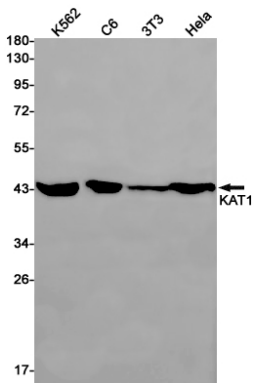
**Background**

Acetylates soluble but not nucleosomal histone H4 at 'Lys-5' (H4K5ac) and 'Lys-12' (H4K12ac) and, to a lesser extent, acetylates histone H2A at 'Lys-5' (H2AK5ac). Has intrinsic substrate specificity that modifies lysine in recognition sequence GXGKXG.

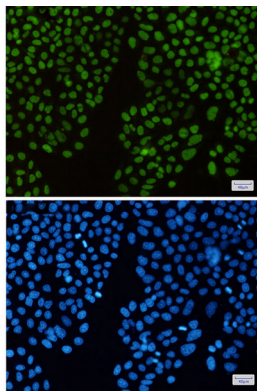
## Research Area

Epigenetics and Nuclear Signaling

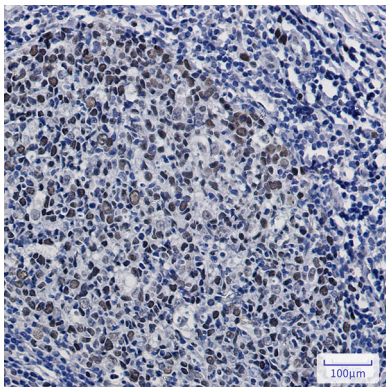
## Image Data



Western blot analysis of KAT1 in K562, C6, 3T3, HeLa lysates using KAT1 antibody.



Immunocytochemistry analysis of KAT1 (green) in HeLa using KAT1 antibody, and DAPI (blue)



Immunohistochemistry analysis of paraffin-embedded Human tonsil using KAT1/HAT1 antibody. High-pressure and temperature Sodium Citrate pH 6.0 was used for antigen retrieval.