
Product Name: KAP1 Rabbit Monoclonal Antibody**Catalog #: AMRe02184**

For research use only.

Summary

Description	Recombinant rabbit monoclonal antibody
Host	Rabbit
Application	WB,IHC,IF,ELISA
Reactivity	Human,Mouse,Rat
Conjugation	Unconjugated
Modification	Unmodified
Isotype	IgG
Clonality	6C3
Form	Liquid
Concentration	0.3mg/ml. The concentration of this product may be batch-dependent.
Storage	Aliquot and store at -20°C (valid for 12 months). Avoid freeze/thaw cycles.
Shipping	Ice bags
Buffer	50mM Tris-Glycine(pH 7.4), 0.15M NaCl, 40% Glycerol, 0.01% Sodium azide and 0.05% protective protein
Purification	Affinity Purification

Application

Dilution Ratio	IHC 1:200-1:1000;WB 1:1000-1:5000;IF 1:200-1:1000;ELISA 1:5000-1:20000;
Molecular Weight	Calculated MW: 89 kDa; Observed MW: 100 kDa

Antigen Information

Gene Name	TRIM28
Alternative Names	TRIM28; KAP1; RNF96; TIF1B; Transcription intermediary factor 1-beta; TIF1-beta; E3 SUMO-protein ligase TRIM28; KRAB-associated protein 1; KAP-1; KRAB-interacting protein 1; KRIP-1; Nuclear corepressor KAP-1; RING finger protein 96; Tripart
Gene ID	10155
SwissProt ID	Q13263
Immunogen	A synthetic peptide corresponding to target protein

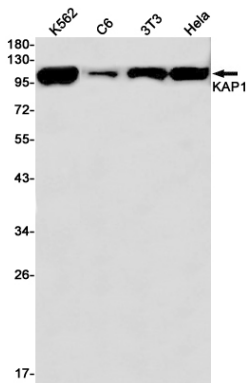
Background

Nuclear corepressor for KRAB domain-containing zinc finger proteins (KRAB-ZFPs). Mediates gene silencing by recruiting CHD3, a subunit of the nucleosome remodeling and deacetylation (NuRD) complex, and SETDB1 (which specifically methylates histone H3 at 'Lys-9' (H3K9me)) to the promoter regions of KRAB target genes.

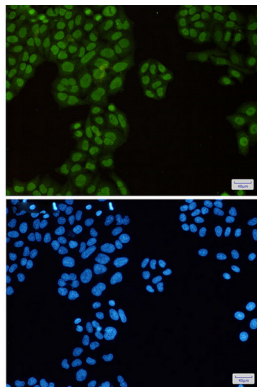
Research Area

Epigenetics and Nuclear Signaling

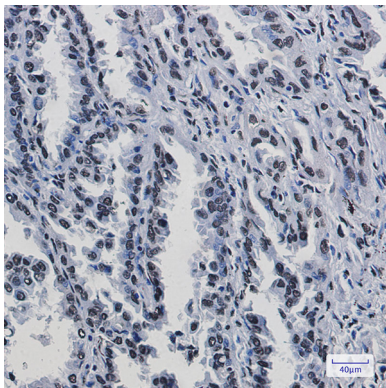
Image Data



Western blot analysis of KAP1 in K562, C6, 3T3, HeLa lysates using KAP1 antibody.



Immunocytochemistry analysis of KAP1(green) in HeLa using KAP1 antibody, and DAPI(blue)



Immunohistochemistry analysis of paraffin-embedded Human lung cancer using KAP1 antibody. High-pressure and temperature Sodium Citrate pH 6.0 was used for antigen retrieval.