
Product Name: INMT Rabbit Monoclonal antibody**Catalog #: AMRe02159**

For research use only.

Summary

Description	Recombinant rabbit monoclonal antibody
Host	Rabbit
Application	WB
Reactivity	Human, Mouse, Rat
Conjugation	Unconjugated
Modification	Unmodified
Isotype	IgG
Clonality	Monoclonal Antibody
Form	Liquid
Concentration	0.11mg/ml. The concentration of this product may be batch-dependent.
Storage	Aliquot and store at -20°C (valid for 12 months). Avoid freeze/thaw cycles.
Shipping	Ice bags
Buffer	50mM Tris-Glycine(pH 7.4), 0.15M NaCl, 40% Glycerol, 0.01% Sodium azide and 0.05% protective protein
Purification	Affinity Purified

Application

Dilution Ratio	WB 1:500-1:1000
Molecular Weight	Calculated MW: 29 kDa; Observed MW: 29 kDa

Antigen Information

Gene Name	INMT
Alternative Names	TEMT
Gene ID	11185
SwissProt ID	O95050
Immunogen	A synthetic peptide of human INMT

Background

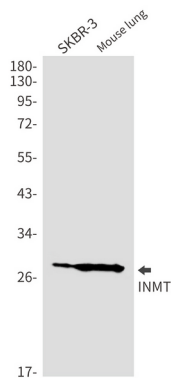
Functions as thioether S-methyltransferase and is active with a variety of thioethers and the corresponding selenium and tellurium compounds, including 3-methylthiopropionaldehyde, dimethyl selenide, dimethyl telluride, 2-methylthioethylamine,

2-methylthioethanol, methyl-n-propyl sulfide and diethyl sulfide. Plays an important role in the detoxification of selenium compounds . Catalyzes the N-methylation of tryptamine and structurally related compounds.

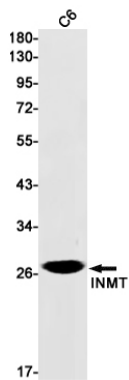
Research Area

Signal Transduction

Image Data



Western blot analysis of INMT in SKBR3, mouse lung lysates using INMT antibody.



Western blot analysis of INMT in C6 lysates using INMT antibody.