

---

**Product Name: ILF3 Rabbit Monoclonal Antibody****Catalog #: AMRe02154**

For research use only.

**Summary**

<b>Description</b>	Recombinant rabbit monoclonal antibody
<b>Host</b>	Rabbit
<b>Application</b>	WB,IHC,ICC/IF,IP
<b>Reactivity</b>	Human,Rat
<b>Conjugation</b>	Unconjugated
<b>Modification</b>	Unmodified
<b>Isotype</b>	IgG
<b>Clonality</b>	Monoclonal
<b>Form</b>	Liquid
<b>Concentration</b>	0.53mg/ml. The concentration of this product may be batch-dependent.
<b>Storage</b>	Aliquot and store at -20°C (valid for 12 months). Avoid freeze/thaw cycles.
<b>Shipping</b>	Ice bags
<b>Buffer</b>	50mM Tris-Glycine(pH 7.4), 0.15M NaCl, 40% Glycerol, 0.01% Sodium azide and 0.05% protective protein
<b>Purification</b>	Affinity Purification

**Application**

<b>Dilution Ratio</b>	WB 1:500-1:1000,IHC 1:50-1:100,ICC/IF 1:50-1:200,IP 1:20-1:50
<b>Molecular Weight</b>	Calculated MW: 95 kDa; Observed MW: 95 kDa

**Antigen Information**

<b>Gene Name</b>	ILF3
<b>Alternative Names</b>	ILF3; DRBF; MPHOSPH4; NF90; Interleukin enhancer-binding factor 3; Double-stranded RNA-binding protein 76; DRBP76; M-phase phosphoprotein 4; MPP4; Nuclear factor associated with dsRNA; NFAR; Nuclear factor of activated T-cells 90 kDa; NF-AT-90; Translational control protein 80; TCP80
<b>Gene ID</b>	3609
<b>SwissProt ID</b>	Q12906
<b>Immunogen</b>	A synthetic peptide of human ILF3

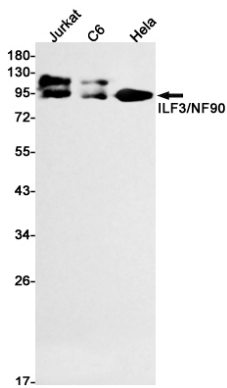
## Background

May facilitate double-stranded RNA-regulated gene expression at the level of post-transcription. Can act as a translation inhibitory protein which binds to coding sequences of acid beta-glucosidase (GCCase) and other mRNAs and functions at the initiation phase of GCCase mRNA translation, probably by inhibiting its binding to polysomes.

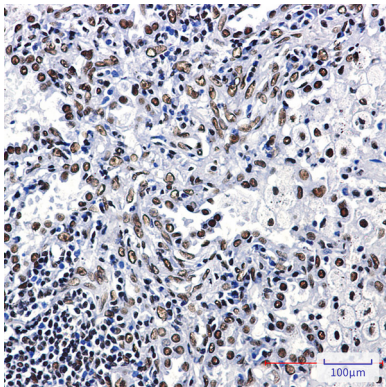
## Research Area

Signal Transduction

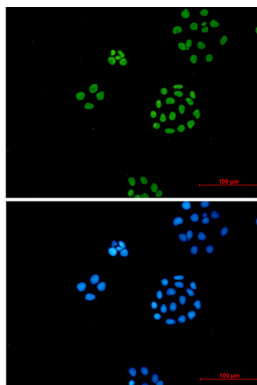
## Image Data



Western blot analysis of ILF3/NF90 in Jurkat, C6, HeLa lysates using ILF3 antibody.



Immunohistochemistry analysis of paraffin-embedded Human lung cancer using ILF3 antibody. High-pressure and temperature Sodium Citrate pH 6.0 was used for antigen retrieval.



Immunocytochemistry analysis of ILF3 (green) in HeLa cells using ILF3 antibody, and DAPI (blue)