

---

**Product Name: IGFBP6 Rabbit Monoclonal Antibody****Catalog #: AMRe02141**

For research use only.

**Summary**

<b>Description</b>	Recombinant rabbit monoclonal antibody
<b>Host</b>	Rabbit
<b>Application</b>	WB
<b>Reactivity</b>	Human
<b>Conjugation</b>	Unconjugated
<b>Modification</b>	Unmodified
<b>Isotype</b>	IgG
<b>Clonality</b>	Monoclonal
<b>Form</b>	Liquid
<b>Concentration</b>	1mg/ml. The concentration of this product may be batch-dependent.
<b>Storage</b>	Aliquot and store at -20°C (valid for 12 months). Avoid freeze/thaw cycles.
<b>Shipping</b>	Ice bags
<b>Buffer</b>	50mM Tris-Glycine(pH 7.4), 0.15M NaCl, 40% Glycerol, 0.01% Sodium azide and 0.05% protective protein
<b>Purification</b>	Affinity Purification

**Application**

<b>Dilution Ratio</b>	WB 1:500-1:1000
<b>Molecular Weight</b>	Calculated MW: 25 kDa; Observed MW: 35 kDa

**Antigen Information**

<b>Gene Name</b>	IGFBP6
<b>Alternative Names</b>	IBP6
<b>Gene ID</b>	3489
<b>SwissProt ID</b>	P24592
<b>Immunogen</b>	Recombinant protein of human IGFBP6

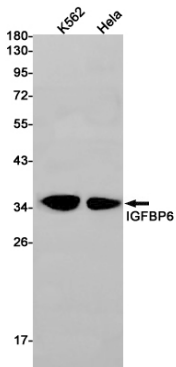
**Background**

IGF-binding proteins prolong the half-life of the IGFs and have been shown to either inhibit or stimulate the growth promoting effects of the IGFs on cell culture. They alter the interaction of IGFs with their cell surface receptors.

## Research Area

Neuroscience

## Image Data



Western blot analysis of IGFBP6 in K562, HeLa lysates using IGFBP6 antibody.